

DELHI TRANSCO LTD.
STATE LOAD DISPATCH CENTER

PROGRESS REPORT

AUGUST 2015

| S. No. | CONTENTS | Page No. |
|---------------|--|-----------------|
| 1. | Salient Features of Delhi Power System | 3 |
| 2. | Performance of Generating Stations within Delhi | 4 |
| 3. | Details of Outage of Generating Stations within Delhi | 5-11 |
| 4. | Allocation of Power to Delhi from unallocated quota of central sector | 12-14 |
| 5. | Allocation of Power to Discoms | 15 |
| 6. | Power Availability Demand Position of Delhi at the time of occurrence of Peak Demand | 16 |
| 7. | Power Availability Demand Position of Delhi at the time of occurrence of Maximum Un-Restricted Demand | 17 |
| 8. | Source wise scheduled drawl from grid and Availability within Delhi | 18-21 |
| 9. | Shedding Details | 22-26 |
| 10. | Load Curve for the Day of Peak Demand | 27 |
| 11. | Load Curve for the day of occurrence of Maximum Un-Restricted Demand | 28 |
| 12. | Load Curve for the day of Maximum Energy Consumed | 29 |
| 13. | Load Curve for the day of Maximum Un-Restricted Energy Demand | 30 |
| 14. | Load Duration Curve | 31 |
| 15. | Frequency Analysis | 32 |
| 16. | Voltage Profile for significant 220kV Sub-Stations | 33 |
| 17. | Voltage Profile for significant 400kV Sub-Stations | 34-35 |
| 18. | Details of Capacitors Installations in Delhi | 36-41 |
| 19. | Tripping Details of 400/220 KV System in Delhi Power System | 42-46 |
| 20. | Details of Under frequency Relay operations in Delhi Power System | 47 |

SALIENT FEATURES OF DELHI POWER SYSTEM

| Sr. No. | Features | AUG 2014 | AUG 2015 |
|----------------|--|-----------------|-----------------|
| 1 | Effective Generation Capacity within Delhi in MW | | |
| | Rajghat Power House | 135 | 135 |
| | Gas Turbine | 270 | 270 |
| | Pragati Power Corporation Ltd. | 330 | 330 |
| | Badapur Thermal Power Station | 705 | 705 |
| | Rithala GT | 108 | 108 |
| | Bawana | 1372 | 1372 |
| | TOWMCL | 16 | 16 |
| | Total | 2936 | 2936 |
| 2 | Maximum Unrestricted Demand (MW) | 5589 | 5438 |
| | Date | 27.08.2014 | 27.08.2015 |
| | Time | 22.49.14 | 22.54.38 |
| 3 | Peak Demand met (MW) | 5507 | 5434 |
| | Date | 27.08.2014 | 27.08.2015 |
| | Time | 22.49.14 | 22.54.38 |
| 4 | Peak Availability (MW) | 5397 | 5309 |
| 5 | Shortage (-) / Surplus (+) in MW | (-) 110 | (-)125 |
| 6 | Percentage Shortage (-) / Surplus (+) | (-) 2.00 | (-) 2.3 |
| 7 | Maximum Energy Consume in a day (Mus) | 116.033 | 112.083 |
| 8 | Energy Consumed during the month | 3211.821 | 3078.010 |
| 9 | Load Shedding in Mus | | |
| A) | Due to Grid Restrictions | | |
| i) | Under Frequency Relay Operations | 0.000 | 0.000 |
| ii) | Manual Load shedding from DTL S/Stns. | 0.000 | 0.000 |
| iii) | Load Shedding due to low frequency / Low Voltage / TTC/ATC Violation | | |
| | NDPL | 1.018 | 0.163 |
| | BRPL | 3.315 | 0.969 |
| | BYPL | 1.801 | 0.042 |
| | NDMC | 0.075 | 0.010 |
| | MES | 0.003 | 0.000 |
| iv) | Due to transmission Constraints in Central Sector | 0.000 | 0.000 |
| | Total due to Grid Restriction | 6.212 | 1.184 |
| B) | Due to Constraints in System in Mus | | |
| | DTL | 2.553 | 0.794 |
| | NDPL | 0.868 | 0.385 |
| | BRPL | 1.267 | 0.725 |
| | BYPL | 0.707 | 0.426 |
| | NDMC | 0.016 | 0.000 |
| | MES | 0.000 | 0.000 |
| | Other Agencies | 0.129 | 0.000 |
| | Total | 5.540 | 2.330 |
| 10 | Grand Total in Mus | 11.752 | 3.514 |

2. PERFORMANCE OF GENERATING STATIONS WITHIN DELHI DURING AUGUST 2015

A) For the month of August 2015

All Figures in MUs

| S. No | Stations | Gross Generation | Aux. Consumption | Net Generation | Availability (%) | Backing Down |
|-------|--------------|------------------|------------------|----------------|------------------|----------------|
| 1. | RPH | 0.000 | 0.907 | -0.907 | 80.15 | -- |
| 2. | GT | 30.922 | 1.929 | 28.993 | 58.80 | 86.111 |
| 3. | PPCL | 139.082 | 3.822 | 135.260 | 96.63 | 95.529 |
| 4. | BTPS | 252.814 | 25.219 | 227.595 | 98.59 | 218.71 |
| 5. | Rithala | 0.000 | 0.062 | -0.062 | 89.17 | 61.008 |
| 6. | Bawana | 0.000 | 2.963 | -2.963 | 48.28 | 480.185 |
| 7. | Towmcl | 10.730 | 1.816 | 8.914 | -- | -- |
| | TOTAL | 433.548 | 36.718 | 396.83 | -- | 941.543 |

B) For the Year 2013-14 (Upto August 2015)

| Power Station | Effective Capacity (MW) | Net Generation in MUs for Aug 2015 | Availability (%) for Aug 2015 | PLF (%) for Aug 2015 | Cumulative Generation in MUs upto Aug 2015 for the year 2015-16 | Cumulative Availability in % upto Aug 2015 for the year 2015-16 | Cumulative PLF in % upto Aug 2015 for the year 2015-16 |
|---------------|-------------------------|------------------------------------|-------------------------------|----------------------|---|---|--|
| RPH | 135 | -0.907 | 80.15 | -1.04 | 38.264 | 70.43 | 7.99 |
| GT | 270 | 28.993 | 58.80 | 14.61 | 251.509 | 63.93 | 25.89 |
| PPCL | 330 | 135.260 | 96.63 | 56.52 | 789.172 | 96.24 | 66.83 |
| BTPS | 705 | 227.595 | 98.59 | 50.33 | 952.203 | 90.87 | 48.39 |
| Rithala | 108 | -0.062 | 89.17 | 0 | -0.306 | 88.08 | 0 |
| Bawana | 1372 | -2.963 | 48.28 | -0.37 | 700.613 | 52.84 | 14.46 |
| Towmcl | 16 | 8.914 | -- | 90.14 | 54.809 | -- | -- |
| TOTAL | 2936 | 396.83 | -- | -- | 2786.264 | - | -- |

3 DETAILS OF OUTAGES OF GENERATING STNS. WITHIN DELHI W.E.F. APRIL 2014
RPH

| Unit No | Capacity in MW | Outage | | Synchronization | | Reason of Outage |
|---------|----------------|----------|-------|-----------------|-------|--|
| | | Date | Time | Date | Time | |
| 1 | 67.5 | 01.04.15 | 23.20 | 02.04.15 | 19.50 | Stopped due to low demand and high frequency |
| | | 04.04.15 | 13.15 | 06.05.15 | 22.40 | |
| | | 08.05.15 | 13.40 | 11.05.15 | 24.00 | Tripped on boiler tube leakage |
| | | 12.05.15 | 00.00 | 21.05.15 | 11.00 | Stopped due to low demand and high frequency |
| | | 21.05.15 | 11.00 | 31.05.15 | 08.00 | Stopped due to coal shortage |
| | | 31.05.15 | 08.00 | 31.08.15 | 23.59 | Stopped due to low demand and high frequency |

| Unit No | Capacity in MW | Outage | | Synchronization | | Reason of Outage |
|---------|----------------|----------|-------|-----------------|-------|--|
| | | Date | Time | Date | Time | |
| 2 | 67.5 | 30.12.14 | 00.00 | 01.04.15 | 16.00 | Machine under major overhauling |
| | | 02.04.15 | 12.55 | 07.04.15 | 23.59 | Turbine trip |
| | | 08.04.15 | 00.00 | 20.04.15 | 06.45 | Stopped due to low demand and high frequency |
| | | 21.04.15 | 09.50 | 21.05.15 | 15.15 | Turbine tripped |
| | | 07.05.15 | 00.50 | 07.05.15 | 04.20 | Tripped on heavy jerk |
| | | 21.05.15 | 10.20 | 31.05.15 | 08.00 | Stopped due to shortage of coal |
| | | 31.05.15 | 08.00 | 31.08.15 | 23.59 | Stopped due to low demand and high frequency |

(B) Gas Turbine

| Unit No | Capacity in MW | Outage | | Synchronization | | Reason of Outage |
|---------|----------------|----------|-------|-----------------|-------|---|
| | | Date | Time | Date | Time | |
| 1 | 30 | 27.12.14 | 17.40 | 12.05.15 | 18.45 | Stopped due to low demand and high frequency |
| | | 19.05.15 | 18.02 | 12.06.15 | 13.15 | |
| | | 12.06.15 | 22.48 | 24.06.15 | 12.30 | |
| | | 24.06.15 | 12.31 | 30.06.15 | 11.50 | Machine not available due to problem in diesel engine. |
| | | 30.06.15 | 12.10 | 03.08.15 | 13.08 | Stopped due to low demand and high frequency |
| | | 03.08.15 | 17.15 | 07.08.15 | 19.15 | |
| | | 07.08.15 | 19.15 | 08.08.15 | 11.53 | Machine could not be taken on load due to problem in desigle engine |
| | | 12.08.15 | 10.20 | 14.08.15 | 06.07 | Stopped due to low demand and high frequency |
| | | 15.08.15 | 11.53 | 15.08.15 | 12.36 | Machine tripped on emergency trip manual alarm |

| Unit No | Capacity in MW | Outage | | Synchronization | | Reason of Outage |
|---------|----------------|----------|-------|-----------------|-------|--|
| | | Date | Time | Date | Time | |
| 2 | 30 | 01.02.14 | 17.00 | 31.08.15 | 23.59 | Machine stopped due to high viberation |

| Unit No | Capacity in MW | Outage | | Synchronization | | Reason of Outage |
|---------|----------------|----------|-------|-----------------|-------|---|
| | | Date | Time | Date | Time | |
| 3 | 30 | 02.03.15 | 17.45 | 04.04.15 | 10.45 | Stopped due to low demand and high frequency |
| | | 04.04.15 | 16.02 | 04.04.15 | 12.50 | Machine stopped to change absolute filter |
| | | 04.04.15 | 18.51 | 21.04.15 | 10.45 | Stopped due to low demand and high frequency |
| | | 26.04.15 | 09.00 | 06.05.15 | 14.30 | |
| | | 11.05.15 | 08.16 | 11.05.15 | 11.13 | |
| | | 12.05.15 | 14.45 | 21.05.15 | 16.05 | |
| | | 22.05.15 | 00.20 | 22.05.15 | 10.26 | |
| | | 22.05.15 | 15.40 | 22.05.15 | 15.55 | Machine came on FSNL due to jerk |
| | | 23.05.15 | 17.30 | 07.08.15 | 19.35 | Stopped due to low demand and high frequency |
| | | 07.08.15 | 19.35 | 08.08.15 | 16.25 | Machine could not be taken on load due to problem in desigle engine |
| | | 08.08.15 | 16.25 | 10.08.15 | 16.55 | Stopped due to low demand and high frequency |
| | | 11.08.15 | 00.05 | 11.08.15 | 14.18 | Machine started to roll STG-II on 3000RPM for improving the IR value generator |
| | | 13.08.15 | 20.52 | 31.08.15 | 23.59 | Machine tripped due to tripping of 160MVA Pr. Tr. In the grid and not taken on load due to no schedule from SLDC. |

| Unit No | Capacity in MW | Outage | | Synchronization | | Reason of Outage |
|---------|----------------|----------|-------|-----------------|-------|--|
| | | Date | Time | Date | Time | |
| 4 | 30 | 02.03.15 | 17.45 | 04.04.15 | 16.40 | Stopped due to low demand and high frequency |
| | | 04.04.15 | 20.12 | 15.04.15 | 11.08 | |
| | | 16.04.15 | 00.55 | 21.04.15 | 11.32 | |
| | | 27.04.15 | 15.00 | 06.05.15 | 10.46 | |
| | | 12.05.15 | 18.50 | 21.05.15 | 15.57 | |
| | | 22.05.15 | 00.20 | 23.05.15 | 09.48 | |
| | | 23.05.15 | 17.20 | 31.05.15 | 17.46 | |
| | | 31.05.15 | 18.33 | 12.06.15 | 13.05 | |
| | | 13.06.15 | 14.40 | 15.06.15 | 23.59 | Machine tripped due to grid disturbance after that stopped due to low demand and high frequency |
| | | 16.06.15 | 00.00 | 02.07.15 | 23.59 | Stopped due to low demand and high frequency |
| | | 03.07.15 | 00.53 | 03.07.15 | 01.26 | Heavy jerk observed in control room and machine tripped on Electrical trouble normal shutdown and loss of excitation |
| | | 04.07.15 | 19.20 | 17.07.15 | 20.22 | Stopped due to low demand and high frequency |
| | | 17.07.15 | 20.22 | 07.08.15 | 20.26 | Machine not available due to damage of LV side y phase bushing of Unit transformer. |
| | | 08.08.15 | 04.00 | 13.08.15 | 23.05 | Stopped due to low demand and high frequency |
| | | 14.08.15 | 06.12 | 31.08.15 | 23.59 | |

| Unit No | Capacity in MW | Outage | | Synchronization | | Reason of Outage |
|---------|----------------|----------|-------|-----------------|-------|--|
| | | Date | Time | Date | Time | |
| 5 | 30 | 04.04.15 | 16.00 | 04.04.15 | 19.15 | Stopped due to low demand and high frequency |
| | | 15.04.15 | 15.26 | 16.04.15 | 00.10 | |
| | | 22.05.15 | 15.40 | 22.05.15 | 18.50 | Machine came on FSNL due to jerk |
| | | 31.05.15 | 12.40 | 06.06.15 | 15.22 | Machine tripped on electrical trouble normal shutdown |
| | | 06.06.15 | 15.44 | 12.06.15 | 13.37 | Stopped due to low demand and high frequency |
| | | 13.06.15 | 14.40 | 13.06.15 | 15.01 | Machine came on FSNL due to grid disturbance |
| | | 21.06.15 | 11.15 | 22.06.15 | 10.20 | Stopped due to low demand and high frequency |
| | | 25.06.15 | 07.30 | 26.06.15 | 14.02 | |
| | | 23.07.15 | 13.13 | 23.07.15 | 14.07 | Machine tripped due to Islanding from 220 side PPS-I. |
| | | 28.07.15 | 16.52 | 28.07.15 | 18.30 | Tripped due to electrical trouble normal shut down. 52 Pr protection fuse failure alarm appeared on protection panel. |
| | | 28.07.15 | 19.07 | 29.07.15 | 00.32 | Tripped due to electrical trouble normal shut down. 52 Pr protection fuse failure alarm appeared on protection panel. Plug P1 replaced with new plug |
| | | 07.08.15 | 19.00 | 31.08.15 | 23.59 | Stopped due to low demand and high frequency |

| Unit No | Capacity in MW | Outage | | Synchronization | | Reason of Outage |
|---------|----------------|----------|-------|-----------------|-------|--|
| | | Date | Time | Date | Time | |
| 6 | 30 | 26.04.15 | 09.00 | 27.04.15 | 14.02 | Stopped due to low demand and high frequency |
| | | 11.05.15 | 08.17 | 11.05.15 | 11.25 | |
| | | 22.05.15 | 15.40 | 22.05.15 | 15.58 | Machine came on FSNL due to jerk |
| | | 13.06.15 | 14.40 | 13.06.15 | 15.05 | Machine came on FSNL due to grid disturbance |
| | | 02.07.15 | 11.16 | 04.07.15 | 18.10 | Stopped due to Oil leakage in GT-6 |
| | | 06.07.15 | 19.26 | 07.07.15 | 16.00 | Stopped as per SLDC message |
| | | 07.07.15 | 16.00 | 10.07.15 | 23.00 | Stopped to attend oil leakage from GT. |
| | | 10.07.15 | 23.00 | 13.07.15 | 10.22 | Machine available but not taken on load due low schedule |
| | | 14.07.15 | 03.50 | 14.07.15 | 04.06 | Machine came on FSNL due to tripping of 20 MVA Transformer |
| | | 17.07.15 | 08.20 | 17.07.15 | 08.25 | Machine came on FSNL due to tripping of 20 MVA Transformer |
| | | 23.07.15 | 13.13 | 23.07.15 | 14.12 | Machine tripped due to Islanding from 220 side PPS-I. |
| | | 07.08.15 | 19.00 | 31.08.15 | 23.59 | Stopped due to low demand and high frequency |

| Unit No | Capacity in MW | Outage | | Synchronization | | Reason of Outage |
|----------|----------------|----------|-------|---|-------|---|
| | | Date | Time | Date | Time | |
| STG -1 | 30 | 19.11.14 | 21.35 | 12.05.15 | 23.00 | Stopped due to low demand and high frequency |
| | | 19.05.15 | 17.15 | 19.05.15 | 18.00 | Machine tripped on FJB vibration very high |
| | | 19.05.15 | 18.00 | 20.05.15 | 11.30 | Stopped due to low demand and high frequency |
| | | 20.05.15 | 11.30 | 09.06.15 | 23.59 | Machine is N/A due to fire in cable |
| | | 10.06.15 | 00.00 | 12.06.15 | 22.39 | Stopped due to low demand and high frequency |
| | | 12.06.15 | 22.39 | 13.06.15 | 12.00 | Machine could not be taken on load due to problem in vacuum |
| | | 13.06.15 | 12.00 | 20.06.15 | 17.30 | Stopped due to low demand and high frequency |
| | | 20.06.15 | 17.30 | 22.06.15 | 12.00 | Machine not available due to vacuum problem |
| | | 22.06.15 | 12.00 | 24.06.15 | 12.30 | Stopped due to low demand and high frequency |
| | | 24.06.15 | 12.30 | 30.06.15 | 13.00 | Machine not available due to problem in G.T. -1 |
| | | 30.06.15 | 13.00 | 03.08.15 | 16.32 | Stopped due to low demand and high frequency |
| | | 03.08.15 | 17.15 | 07.08.15 | 23.59 | Machine stopped due to low schedule from SLDC |
| | | 09.08.15 | 07.15 | 09.08.15 | 15.55 | Machine stopped due to generator temperature very high |
| | | 12.08.15 | 10.20 | 14.08.15 | 09.15 | Machine stopped due to low schedule from SLDC |
| 15.08.15 | 11.53 | 15.08.15 | 15.04 | Machine tripped due to tripping of GT-1 | | |

| Unit No | Capacity in MW | Outage | | Synchronization | | Reason of Outage |
|---------|----------------|----------|-------|-----------------|-------|--|
| | | Date | Time | Date | Time | |
| STG -2 | 30 | 02.03.15 | 12.40 | 04.04.15 | 15.59 | Stopped due to low demand and high frequency |
| | | 04.04.15 | 16.05 | 04.04.15 | 17.38 | |
| | | 04.04.15 | 18.10 | 15.04.15 | 15.20 | |
| | | 16.04.15 | 00.55 | 21.04.15 | 14.57 | |
| | | 27.04.15 | 15.00 | 06.05.15 | 13.32 | |
| | | 12.05.15 | 11.18 | 12.05.15 | 12.11 | Machine tripped on reverse power operation |
| | | 12.05.15 | 12.30 | 22.05.15 | 14.55 | Machine tripped on axial shift very high |
| | | 22.05.15 | 15.40 | 22.05.15 | 16.48 | Machine tripped due to jerk |
| | | 23.05.15 | 14.00 | 12.06.15 | 17.56 | Machine tripped on axial shift very high |
| | | 13.06.15 | 14.40 | 13.06.15 | 23.59 | Machine tripped due to grid disturbance and further Stopped due to low demand and high frequency |
| | | 14.06.15 | 00.00 | 02.07.15 | 13.15 | Stopped due to low demand and high frequency |
| | | 02.07.15 | 13.15 | 02.07.15 | 22.58 | Stopped due to Diaphragm break up. |
| | | 03.07.15 | 00.53 | 03.07.15 | 02.42 | Machine tripped as GT# 4 tripped on loss of excitation. |
| | | 04.07.15 | 19.20 | 08.08.15 | 02.18 | Stopped due to low demand and high frequency |
| | | 08.08.15 | 02.18 | 12.08.15 | 09.47 | Machine tried to synchronise but the machine tripped on generator stator earth fault |
| | | 13.08.15 | 20.52 | 13.08.15 | 23.59 | Machine stopped due to low schedule from SLDC |
| | | 14.08.15 | 00.00 | 14.08.15 | 12.30 | Machine could not be taken on load due to heavy vibration in turbine bearing no 1 & 2 |
| | | 14.08.15 | 12.30 | 31.08.15 | 23.59 | Machine stopped due to low schedule from SLDC |

| Unit No | Capacity in MW | Outage | | Synchronization | | Reason of Outage |
|---------|----------------|----------|-------|---|-------|--|
| | | Date | Time | Date | Time | |
| STG-3 | 30 | 08.05.15 | 04:55 | 08.05.15 | 08.15 | Machine tripped due to generator back up impedance relay 21G operated |
| | | 22.05.15 | 15:40 | 22.05.15 | 19:05 | Machine tripped due to jerk |
| | | 13.06.15 | 14:40 | 13.06.15 | 16:50 | Machine tripped due to grid disturbance and further Stopped due to low demand and high frequency |
| | | 21.06.15 | 11:15 | 22.06.15 | 11:05 | Stopped due to low demand and high frequency |
| | | 24.06.15 | 01:46 | 24.06.15 | 03:05 | Machine tripped due to tripping of 20MVA pr. Tr. |
| | | 25.06.15 | 07:30 | 26.06.15 | 14:58 | Stopped due to low demand and high frequency |
| | | 04.07.15 | 12:20 | 04.07.15 | 15:30 | machine tripped due to drum level high. FD-7 not operated and both FRS valves having heavy passing |
| | | 10.07.15 | 21:10 | 10.07.15 | 22:25 | Heavy jerk observed in control room and machine tripped. Relay 84,2B operated. |
| | | 14.07.15 | 03:50 | 14.07.15 | 05:52 | All of sudden jerk observed in control room & 20 MVA transformer tripped on relay 51 & 64 operated. STG#3 tripped with jerk. |
| | | 17.07.15 | 08:20 | 17.07.15 | 09:36 | All of sudden jerk observed in control room & 20 MVA transformer tripped on relay 51 operated. STG#3 tripped with jerk. |
| | | 23.07.15 | 13:13 | 23.07.15 | 17:15 | Machine tripped due to Islanding from 220 side PPS-I. |
| | | 1.8.15 | 07:27 | 1.8.15 | 16:30 | Power supply module for CCA 02 panel of DDC failed & Machine tripped on false alarm of both boiler tripp. |
| | | 1.8.15 | 16:30 | 1.8.15 | 17:18 | HRSG#6 made parallel with Hrsg#5 |
| | | 2.8.15 | 01:47 | 2.8.15 | 04:25 | Machine tripped on false alarm of Inlet steam temperature low |
| | | 2.8.15 | 04:25 | 2.8.15 | 04:40 | HRSG#5 made parallel with Hrsg#6 |
| | | 5.8.15 | 11:10 | 5.8.15 | 13:23 | Machine tripped on low vacuum at -0.74 Kg/cm ² while isolating half condenser for back wash. |
| | | 6.8.15 | 18:02 | 7.8.15 | 01:40 | Machine tripped on Heavy jerk |
| | | 7.8.15 | 17:15 | 15.8.15 | 23:59 | Machine tripped as the turbovisory monitor trip with flash occurred in the BCD pannel in control room. |
| | | 16.8.15 | 00:00 | 22.8.15 | 16:45 | Machine stopped due to low schedule from SLDC |
| | | 22.8.15 | 16:45 | 30.8.15 | 16:00 | Stopped to attend smoke from Bearing No.1 and Control valve. |
| 30.8.15 | 16:00 | 31.8.15 | 23:59 | Machine not taken on load due to low schedule from SLDC | | |

(C) PRAGATI

| Unit No | Capacity in MW | Outage | | Synchronization | | Reason of Outage |
|---------|----------------|----------|-------|-----------------|-------|---|
| | | Date | Time | Date | Time | |
| 1 | 104 | 19.04.15 | 11:00 | 20.04.15 | 05:54 | Stopped due to low demand and high frequency |
| | | 06.05.15 | 09:13 | 06.05.15 | 12:22 | Stopped by DTL to attend hot spot |
| | | 10.05.15 | 07:21 | 10.05.15 | 17:13 | Stopped due to low demand and high frequency |
| | | 28.05.15 | 04:37 | 28.05.15 | 08:37 | Unit tripped due to grid disturbance |
| | | 06.05.15 | 09:13 | 06.05.15 | 12:22 | Unit stopped as desired by DTL to attend hot spot |
| | | 10.05.15 | 07:21 | 10.05.15 | 17:13 | Stopped due to low demand and high frequency |
| | | 28.05.15 | 04:37 | 28.05.15 | 08:37 | Unit tripped due to grid disturbance |
| | | 03.06.15 | 15:25 | 05.06.15 | 11:08 | Machine stopped to attend hot spot. |
| | | 13.06.15 | 14:40 | 13.06.15 | 15:46 | Machine tripped due to grid disturbance |
| | | 04.07.15 | 20:11 | 04.07.15 | 21:20 | Unit tripped on grid disturbance |
| | | 09.07.15 | 14:59 | 09.07.15 | 15:40 | Unit tripped due to gas pressure disturbance at GAIL end. |
| | | 22.07.15 | 23:30 | 25.07.15 | 06:00 | Stopped due to low demand and high frequency |
| | | 01.08.15 | 00:00 | 01.08.15 | 11:51 | Stopped due to low demand and high frequency |
| | | 08.08.15 | 04:28 | 08.08.15 | 05:50 | Tripped due to internal fault |
| | | 09.08.15 | 10:20 | 12.08.15 | 19:13 | Stopped due to low demand and high frequency |
| | | 13.08.15 | 17:49 | 13.08.15 | 21:09 | Unit tripped due to internal fault |
| | | 16.08.15 | 00:48 | 24.08.15 | 10:52 | Stopped due to low demand and high frequency |
| | | 27.08.15 | 08:32 | 27.08.15 | 11:06 | Tripped on internal fault |

| Unit No | Capacity in MW | Outage | | Synchronization | | Reason of Outage |
|----------|----------------|----------|-------|-----------------|-------|--|
| | | Date | Time | Date | Time | |
| 2 | 104 | 01.04.15 | 00.00 | 19.04.15 | 07.47 | Stopped due to low demand and high frequency |
| | | 24.04.15 | 15.09 | 24.04.15 | 16.31 | Unit tripped on internal fault |
| | | 16.05.15 | 00.00 | 18.05.15 | 08.44 | Stopped due to low demand and high frequency |
| | | 20.05.15 | 04.01 | 20.05.15 | 10.05 | |
| | | 16.05.15 | 00.00 | 18.05.15 | 08.44 | |
| | | 20.05.15 | 04.01 | 20.05.15 | 10.05 | |
| | | 13.06.15 | 15.12 | 13.06.15 | 15.46 | Machine stopped due to grid disturbance |
| | | 13.06.15 | 15.46 | 16.06.15 | 10.47 | Stopped due to low demand and high frequency |
| | | 21.06.15 | 09.34 | 22.06.15 | 10.29 | |
| | | 25.06.15 | 06.45 | 26.06.15 | 14.05 | |
| | | 07.07.15 | 00.05 | 07.07.15 | 10.18 | Unit stopped and started as desired by SLDC |
| | | 11.07.15 | 09.15 | 15.07.15 | 17.58 | |
| | | 19.07.15 | 10.45 | 21.07.15 | 10.10 | |
| | | 22.07.15 | 21.30 | 23.07.15 | 16.08 | |
| | | 01.08.15 | 14.07 | 03.08.15 | 08.47 | |
| | | 08.08.15 | 04.04 | 08.08.15 | 06.04 | Unit tripped due to internal fault |
| | | 09.08.15 | 10.15 | 10.08.15 | 06.08 | Stopped due to low demand and high frequency |
| | | 15.08.15 | 10.45 | 17.08.15 | 08.30 | |
| 23.08.15 | 23.14 | 26.08.15 | 16.31 | | | |

| Unit No | Capacity in MW | Outage | | Synchronization | | Reason of Outage |
|---------|----------------|----------|-------|-----------------|-------|--|
| | | Date | Time | Date | Time | |
| STG | 122 | 06.05.15 | 05.13 | 06.05.15 | 09.05 | Stopped by DTL to attend hot spot |
| | | 10.05.15 | 16.48 | 10.05.15 | 18.42 | Stopped due to low demand and high frequency |
| | | 28.05.15 | 04.37 | 28.05.15 | 07.26 | Unit tripped due to grid disturbance |
| | | 06.05.15 | 05.13 | 06.05.15 | 09.05 | Unit stopped by DTL to attend hot spot |
| | | 10.05.15 | 16.48 | 10.05.15 | 18.42 | Stopped due to low demand and high frequency |
| | | 28.05.15 | 04.37 | 28.05.15 | 07.26 | Unit tripped due to grid disturbance |
| | | 11.06.15 | 13.21 | 11.06.15 | 14.20 | Unit tripped due to internal fault |
| | | 13.06.15 | 15.12 | 13.06.15 | 16.47 | Unit tripped due to grid disturbance |
| | | 04.07.15 | 20.11 | 04.07.15 | 21.42 | |
| | | 22.07.15 | 21.59 | 22.07.15 | 22.54 | Unit tripped on internal fault |
| | | 22.07.15 | 22.30 | 23.07.15 | 18.07 | Unit stopped and started as desired by SLDC |
| | | 24.07.15 | 01.57 | 24.07.15 | 10.03 | Unit stopped due to internal fault |
| | | 08.08.15 | 04.28 | 08.08.15 | 07.16 | |
| | | 09.08.15 | 10.20 | 10.08.15 | 11.58 | Stopped due to low demand and high frequency |
| | | 16.08.15 | 00.48 | 17.08.15 | 14.34 | |
| | | 23.08.15 | 23.14 | 24.08.15 | 14.55 | |

(D) **BADARPUR THERMAL POWER STATION**

| Unit | Capacity in MW | Outage | | Synchronization | | Reason of Outage |
|------|----------------|----------|-------|-----------------|-------|--|
| | | Date | Time | Date | Time | |
| 1 | 95 | 01.04.15 | 00.00 | 31.08.15 | 23.59 | Stopped due to low demand and high frequency |

| Unit | Capacity in MW | Outage | | Synchronization | | Reason of Outage |
|------|----------------|----------|-------|-----------------|-------|--|
| | | Date | Time | Date | Time | |
| 2 | 95 | 01.04.15 | 00.00 | 21.04.15 | 13.44 | Stopped due to low demand and high frequency |
| | | 01.05.15 | 14.55 | 07.05.15 | 01.27 | |
| | | 07.05.15 | 13.07 | 07.05.15 | 20.57 | AVR & Excitation system |
| | | 11.05.15 | 13.57 | 05.08.15 | 23.59 | Stopped due to low demand and high frequency |
| | | 06.08.15 | 00.00 | 31.08.15 | 23.59 | |

| Unit | Capacity in MW | Outage | | Synchronization | | Reason of Outage |
|----------|----------------|----------|-------|-----------------|-------|--|
| | | Date | Time | Date | Time | |
| 3 | 95 | 01.04.15 | 00.00 | 01.04.15 | 16.00 | Economizer tube leakage |
| | | 01.04.15 | 16.00 | 20.04.15 | 22.50 | Stopped due to low demand and high frequency |
| | | 15.05.15 | 17.20 | 27.05.15 | 22.09 | |
| | | 13.06.15 | 20.34 | 19.06.15 | 00.00 | |
| | | 20.06.15 | 00.00 | 20.06.15 | 17.35 | AVR & Excitation system problem |
| | | 25.06.15 | 08.16 | 04.07.15 | 20.41 | Stopped due to low demand and high frequency |
| | | 17.07.15 | 20.52 | 23.07.15 | 06.28 | |
| | | 29.07.15 | 12.59 | 29.07.15 | 14.59 | Differential protection |
| | | 29.07.15 | 14.59 | 01.08.15 | 19.35 | Stopped due to low demand and high frequency |
| 03.08.15 | 20.38 | 31.08.15 | 12.40 | | | |

| Unit | Capacity in MW | Outage | | Synchronization | | Reason of Outage |
|------|----------------|----------|-------|-----------------|-------|---|
| | | Date | Time | Date | Time | |
| 4 | 210 | 05.04.15 | 11.00 | 06.04.15 | 18.48 | Water wall leakage |
| | | 10.05.15 | 00.34 | 10.05.15 | 06.45 | AVR & Excitation system |
| | | 11.05.15 | 15.18 | 11.05.15 | 17.36 | Human error vacuum low |
| | | 18.05.15 | 06.12 | 18.05.15 | 12.33 | 6.6kv breaker problem |
| | | 31.05.15 | 23.31 | 03.06.15 | 13.37 | 6.6kv breaker problem |
| | | 03.06.15 | 13.37 | 06.06.15 | 05.03 | Stopped due to low demand and high frequency |
| | | 05.08.15 | 08.11 | 05.08.15 | 14.29 | Stopped due to Generation , auxiliaries and electrical system problem |

| Unit | Capacity in MW | Outage | | Synchronization | | Reason of Outage |
|------|----------------|----------|-------|-----------------|-------|--|
| | | Date | Time | Date | Time | |
| 5 | 210 | 01.04.15 | 00.00 | 10.05.15 | 21.04 | Planned shutdown |
| | | 13.05.15 | 00.30 | 13.05.15 | 12.55 | Human error durm level low |
| | | 26.05.15 | 06.47 | 26.05.15 | 11.04 | Leakage in BFP a disch flow transmitter |
| | | 05.06.15 | 21.14 | 08.06.15 | 17.30 | Super heater leakage |
| | | 08.06.15 | 17.30 | 09.06.15 | 01.40 | Stopped due to low demand and high frequency |
| | | 01.08.15 | 13.56 | 03.08.15 | 13.40 | Stopped due to Boiler and auxiliaries |

(E) **BAWANA CCGT POWER STATION**

| Unit | Capacity in MW | Outage | | Synchronization | | Reason of Outage |
|------|----------------|----------|-------|-----------------|-------|---|
| | | Date | Time | Date | Time | |
| 1 | 216 | 19.01.15 | 14.26 | 25.04.15 | 07.40 | G.T.-I compressor stalled detected STG-I simultaneously tripped |
| | | 01.05.15 | 14.04 | 01.05.15 | 16.07 | Unit tripped on customer trip alarm |
| | | 15.05.15 | 14.24 | 25.05.15 | 11.00 | Stopped due to low demand and high frequency |
| | | 25.05.15 | 11.00 | 04.06.15 | 18.15 | Bushing change of G.T.-I transformer |
| | | 04.06.15 | 18.15 | 16.06.15 | 11.29 | Stopped due to low demand and high frequency |
| | | 22.06.15 | 15.30 | 22.06.15 | 21.00 | Unit tripped on pole discrepancy relay |
| | | 22.06.15 | 21.00 | 14.07.15 | 03.10 | Stopped due to low demand and high frequency |
| | | 16.07.15 | 02.18 | 31.08.15 | 23.59 | Machine tripped due to compressor stalling alarm |

| Unit | Capacity in MW | Outage | | Synchronization | | Reason of Outage |
|------|----------------|----------|-------|-----------------|-------|--|
| | | Date | Time | Date | Time | |
| 2 | 216 | 13.04.15 | 16.18 | 13.04.15 | 17.48 | Tripping of 2DA emergency section bus coupler, resultend GT-2 tripped on low lube oil pressure |
| | | 25.04.15 | 23.17 | 15.05.15 | 06.50 | Stopped due to low demand and high frequency |
| | | 30.05.15 | 19.04 | 09.06.15 | 09.00 | |
| | | 09.06.15 | 09.00 | 21.06.15 | 11.00 | Unit taken under CI |
| | | 21.06.15 | 11.00 | 22.06.15 | 16.37 | Stopped due to low demand and high frequency |
| | | 11.07.15 | 15.12 | 16.07.15 | 06.14 | Stopped due to low demand and high frequency |
| | | 19.07.15 | 10.22 | 31.08.15 | 23.59 | |

| Unit | Capacity in MW | Outage | | Synchronization | | Reason of Outage |
|------|----------------|----------|-------|-----------------|-------|---|
| | | Date | Time | Date | Time | |
| 3 | 216 | 24.03.15 | 04:47 | 31.08.15 | 23:59 | Tripped due to G.T. -3 generator transformer engulfed in fire with huge blast |

| Unit | Capacity in MW | Outage | | Synchronization | | Reason of Outage |
|------|----------------|----------|-------|-----------------|-------|--|
| | | Date | Time | Date | Time | |
| 4 | 216 | 01.04.15 | 00.00 | 05.05.15 | 17.00 | Stopped due to low demand and high frequency |
| | | 05.05.15 | 17.00 | 19.05.15 | 21.00 | Bushing change of G.T.-4 Transformer |
| | | 19.05.15 | 21.00 | 30.05.15 | 19.04 | Stopped due to low demand and high frequency |
| | | 14.06.15 | 02.00 | 13.07.15 | 14.42 | |
| | | 14.07.15 | 00.23 | 15.07.15 | 11.15 | GT-4 exhaust spread high |
| | | 15.07.15 | 11.15 | 22.07.15 | 12.04 | |
| | | 25.07.15 | 21.49 | 31.08.15 | 23.59 | Stopped due to low demand and high frequency |

| Unit | Capacity in MW | Outage | | Synchronization | | Reason of Outage |
|----------|----------------|----------|-------|--|-------|--|
| | | Date | Time | Date | Time | |
| STG-1 | 254 | 13.04.15 | 16.18 | 13.04.15 | 19.16 | Unit stopped due to tripping of G.T. -2 |
| | | 20.04.15 | 13.32 | 20.04.15 | 15.31 | Unit tripped due to PDMX appeared on GRP panel |
| | | 01.05.15 | 14.10 | 01.05.15 | 17.29 | Machine stopped due to G.T.-1 tripped |
| | | 02.05.15 | 16.29 | 02.05.15 | 22.34 | Unit tripped on HP exhaust steam temperature very high |
| | | 30.05.15 | 19.10 | 04.06.15 | 18.00 | Stopped due to low demand and high frequency |
| | | 04.06.15 | 18.00 | 14.06.15 | 22.00 | STG -1 for bushing change |
| | | 14.06.15 | 22.00 | 16.06.15 | 20.27 | Stopped due to low demand and high frequency |
| | | 22.06.15 | 15.38 | 22.06.15 | 20.12 | STG tripped due to tripping of unit . I |
| | | 01.07.15 | 20.56 | 01.07.15 | 21.50 | STG-I tripped because of shaft voltage high |
| | | 11.07.15 | 15.15 | 14.07.15 | 06.55 | Stopped due to low demand and high frequency |
| | | 16.07.15 | 02.18 | 16.07.15 | 10.59 | Tripped subsequent to GT-1 and then sync with GT-2 |
| 16.07.15 | 10.28 | 31.08.15 | 23.59 | Stopped due to low demand and high frequency | | |

| Unit | Capacity in MW | Outage | | Synchronization | | Reason of Outage |
|-------|----------------|----------|-------|-----------------|-------|--|
| | | Date | Time | Date | Time | |
| STG-2 | 254 | 01.04.15 | 00.00 | 05.05.15 | 17.00 | Stopped due to low demand and high frequency |
| | | 19.05.15 | 21.00 | 30.05.15 | 19.04 | |
| | | 03.06.15 | 18.26 | 03.06.15 | 20.33 | STG -2 tripped due to CW problem |
| | | 14.06.15 | 02.00 | 14.07.15 | 00.03 | Stopped due to low demand and high frequency |
| | | 14.07.15 | 00.23 | 15.07.15 | 11.15 | Tripped subsequent to GT-4 |
| | | 15.07.15 | 11.15 | 22.07.15 | 20.23 | Stopped due to low demand and high frequency |
| | | 25.07.15 | 20.38 | 25.07.15 | 21.38 | STG . II tripped |
| | | 25.07.15 | 21.49 | 31.08.15 | 23.59 | Stopped due to low demand and high frequency |

(F) RITHALA POWER STATION

| Unit | Capacity in MW | Outage | | Synchronization | | Reason of Outage |
|------|----------------|----------|-------|-----------------|-------|--|
| | | Date | Time | Date | Time | |
| 1 | 31.8 | 19.03.13 | 17:32 | 31.08.15 | 23:59 | Stopped due to low demand and high frequency |

| Unit | Capacity in MW | Outage | | Synchronization | | Reason of Outage |
|------|----------------|----------|-------|-----------------|-------|--|
| | | Date | Time | Date | Time | |
| 2 | 31.8 | 07.06.13 | 22:41 | 31.08.15 | 23:59 | Stopped due to low demand and high frequency |

| Unit | Capacity in MW | Outage | | Synchronization | | Reason of Outage |
|------|----------------|----------|-------|-----------------|-------|--|
| | | Date | Time | Date | Time | |
| STG | 31.8 | 07.06.13 | 22:38 | 31.08.15 | 23:59 | Stopped due to low demand and high frequency |

ALLOCATION OF POWER TO DELHI

A)

Time block 00.00hrs. to 24.00hrs. @ 0% allocation from Unallocated Quota w.e.f. 01.04.2015

| Name of the Stn | Installed capacity | Total Un-allocated | Basic Allocation | Basic Allocation at periphery | Allocation out of Unallocated Quota | Allocation out of Un-allocation Quota at Delhi periphery | Total allocation at Delhi periphery |
|---|--------------------|--------------------|------------------|-------------------------------|-------------------------------------|--|-------------------------------------|
| 1 | 2 | 3 | 4 | 5 | 6 | 7 | (8)=(5)+(7) |
| <u>NTPC STATIONS</u> | | | | | | | |
| Singrauli STPS | 2000 | 300 | 150 | 130 | 0 | 0 | 130 |
| Rihand-I | 1000 | 150 | 100 | 87 | 0 | 0 | 87 |
| Rihand Stage -II | 1000 | 150 | 126 | 109 | 0 | 0 | 109 |
| Rihand Stage -III | 1000 | 150 | 132 | 115 | 0 | 0 | 115 |
| ANTA GPS | 419 | 63 | 44 | 41 | 0 | 0 | 41 |
| Auriya GPS | 663.36 | 99 | 72 | 67 | 0 | 0 | 67 |
| Dadri GPS | 829.78 | 129 | 91 | 85 | 0 | 0 | 85 |
| Dadri NCTPS (Th) | 840 | 0 | 576 | 500 | 0 | 0 | 500 |
| Dadri NCTPS (Th) Stage-II | 980 | 147 | 735 | 639 | 0 | 0 | 639 |
| Unchahaar-I TPS | 420 | 20 | 24 | 21 | 0 | 0 | 21 |
| Unchahaar-II TPS | 420 | 63 | 47 | 41 | 0 | 0 | 41 |
| Unchahaar-III TPS | 210 | 31 | 29 | 25 | 0 | 0 | 25 |
| TOTAL | 9782 | 1302 | 2126 | 1860 | 0 | 0 | 1860 |
| <u>NHPC</u> | | | | | | | |
| Baira Suil HPS | 180 | 0 | 20 | 19 | 0 | 0 | 19 |
| Salal HPS | 690 | 0 | 80 | 76 | 0 | 0 | 76 |
| Tanakpur HEP | 94 | 0 | 12 | 11 | 0 | 0 | 11 |
| Chamera HEP | 540 | 0 | 43 | 41 | 0 | 0 | 41 |
| Chamera-II HEP | 300 | 54 | 40 | 38 | 0 | 0 | 38 |
| Chamera-III HEP | 231 | 35 | 29 | 28 | 0 | 0 | 28 |
| URI-I HEP | 480 | 0 | 53 | 50 | 0 | 0 | 50 |
| URI-II HEP | 240 | 0 | 32 | 31 | 0 | 0 | 31 |
| Sewa HEP | 120 | 18 | 16 | 15 | 0 | 0 | 15 |
| Dhauri Ganga HEP | 280 | 42 | 37 | 35 | 0 | 0 | 35 |
| Dulhasti HEP | 390 | 58 | 50 | 48 | 0 | 0 | 48 |
| Parbati-III HEP | 520 | 66 | 66 | 63 | 0 | 0 | 63 |
| TOTAL | 4065 | 272 | 479 | 455 | 0 | 0 | 455 |
| <u>NPC</u> | | | | | | | |
| Narora APS | 440 | 64 | 47 | 41 | 0 | 0 | 41 |
| RAPP (C) | 440 | 64 | 56 | 49 | 0 | 0 | 49 |
| TOTAL | 880 | 128 | 103 | 89 | 0 | 0 | 89 |
| <u>SVJNL</u> | | | | | | | |
| Nathpa Jhakri HEP | 1500 | 149 | 142 | 135 | 0 | 0 | 135 |
| <u>THDC</u> | | | | | | | |
| Tehri Hydro | 1000 | 99 | 103 | 98 | 0 | 0 | 98 |
| Koteshwar HEP | 400 | 40 | 39 | 37 | 0 | 0 | 37 |
| TOTAL | 1400 | 139 | 142 | 135 | 0 | 0 | 135 |
| Total | 17627 | 1990 | 2992 | 2674 | 0 | 0 | 2674 |
| <u>Allocation from ER and Tala HEP</u> | | | | | | | |
| Farakka | 1600 | 0 | 22 | 19 | 0 | 0 | 19 |
| Kahalgaon | 840 | 0 | 51 | 43 | 0 | 0 | 43 |
| Talchar | 1000 | 0 | 0 | 0 | 0 | 0 | 0 |
| Tala HEP | 1020 | 153 | 30 | 25 | 0 | 0 | 25 |
| Kahalgaon-II | 1500 | 0 | 157 | 131 | 0 | 0 | 131 |
| Total ER | 5960 | 153 | 261 | 217 | 0 | 0 | 217 |
| <u>Joint Venture</u> | | | | | | | |
| Jhajjar TPS | 1500 | 114 | 0 | 0 | 0 | 0 | 0 |
| Ultra Mega Projects | | | | | | | |
| Sasan | 3960 | 0 | 446 | 383 | 0 | 0 | 383 |
| Grand Total | 29047 | 2257 | 3698 | 3275 | 0 | 0 | 3275 |

B) Time block 00.00hrs. to 24.00hrs. @ 0% allocation from Unallocated Quota w.e.f. 01.07.2015

| Name of the Stn | Installed capacity | Total Un-allocated | Basic Allocation | Basic Allocation at periphery | Allocation out of Unallocated Quota | Allocation out of Un-allocation Quota at Delhi periphery | Total allocation at Delhi periphery |
|---|--------------------|--------------------|------------------|-------------------------------|-------------------------------------|--|-------------------------------------|
| 1 | 2 | 3 | 4 | 5 | 6 | 7 | (8)=(5)+(7) |
| <u>NTPC STATIONS</u> | | | | | | | |
| Singrauli STPS | 2000 | 300 | 150 | 130 | 0 | 0 | 130 |
| Rihand-I | 1000 | 150 | 100 | 87 | 0 | 0 | 87 |
| Rihand Stage -II | 1000 | 150 | 126 | 109 | 0 | 0 | 109 |
| Rihand Stage -III | 1000 | 150 | 132 | 115 | 0 | 0 | 115 |
| ANTA GPS | 419 | 63 | 44 | 41 | 0 | 0 | 41 |
| Auriya GPS | 663.36 | 99 | 72 | 67 | 0 | 0 | 67 |
| Dadri GPS | 829.78 | 129 | 91 | 85 | 0 | 0 | 85 |
| Dadri NCTPS (Th) | 840 | 0 | 576 | 500 | 0 | 0 | 500 |
| Dadri NCTPS (Th) Stage-II | 980 | 147 | 735 | 639 | 0 | 0 | 639 |
| Unchahaar-I TPS | 420 | 20 | 24 | 21 | 0 | 0 | 21 |
| Unchahaar-II TPS | 420 | 63 | 47 | 41 | 0 | 0 | 41 |
| Unchahaar-III TPS | 210 | 31 | 29 | 25 | 0 | 0 | 25 |
| TOTAL | 9782 | 1302 | 2126 | 1860 | 0 | 0 | 1860 |
| <u>NHPC</u> | | | | | | | |
| Baira Suil HPS | 180 | 0 | 20 | 19 | 0 | 0 | 19 |
| Salal HPS | 690 | 0 | 80 | 76 | 0 | 0 | 76 |
| Tanakpur HEP | 94 | 0 | 12 | 11 | 0 | 0 | 11 |
| Chamera HEP | 540 | 0 | 43 | 41 | 0 | 0 | 41 |
| Chamera-II HEP | 300 | 54 | 40 | 38 | 0 | 0 | 38 |
| Chamera-III HEP | 231 | 35 | 29 | 28 | 0 | 0 | 28 |
| URI-I HEP | 480 | 0 | 53 | 50 | 0 | 0 | 50 |
| URI-II HEP | 240 | 0 | 32 | 31 | 0 | 0 | 31 |
| Sewa HEP | 120 | 18 | 16 | 15 | 0 | 0 | 15 |
| Dhauri Ganga HEP | 280 | 42 | 37 | 35 | 0 | 0 | 35 |
| Dulhasti HEP | 390 | 58 | 50 | 48 | 0 | 0 | 48 |
| Parbati-III HEP | 520 | 66 | 66 | 63 | 0 | 0 | 63 |
| TOTAL | 4065 | 272 | 479 | 455 | 0 | 0 | 455 |
| <u>NPC</u> | | | | | | | |
| Narora APS | 440 | 64 | 47 | 41 | 0 | 0 | 41 |
| RAPP (C) | 440 | 64 | 56 | 49 | 0 | 0 | 49 |
| TOTAL | 880 | 128 | 103 | 89 | 0 | 0 | 89 |
| <u>SVJNL</u> | | | | | | | |
| Nathpa Jhakri HEP | 1500 | 149 | 142 | 135 | 0 | 0 | 135 |
| <u>THDC</u> | | | | | | | |
| Tehri Hydro | 1000 | 99 | 103 | 98 | 0 | 0 | 98 |
| Koteshwar HEP | 400 | 40 | 39 | 37 | 0 | 0 | 37 |
| TOTAL | 1400 | 139 | 142 | 135 | 0 | 0 | 135 |
| Total | 17627 | 1990 | 2992 | 2674 | 0 | 0 | 2674 |
| <u>Allocation from ER and Tala HEP</u> | | | | | | | |
| Farakka | 1600 | 0 | 22 | 19 | 0 | 0 | 19 |
| Kahalgaon | 840 | 0 | 51 | 43 | 0 | 0 | 43 |
| Talchar | 1000 | 0 | 0 | 0 | 0 | 0 | 0 |
| Tala HEP | 1020 | 153 | 30 | 25 | 0 | 0 | 25 |
| Kahalgaon-II | 1500 | 0 | 157 | 131 | 0 | 0 | 131 |
| Total ER | 5960 | 153 | 261 | 217 | 0 | 0 | 217 |
| <u>Joint Venture</u> | | | | | | | |
| Jhajjar TPS | 1500 | 114 | 304 | 273 | 0 | 0 | 273 |
| Ultra Mega Projects | | | | | | | |
| Sasan | 3960 | 0 | 446 | 383 | 0 | 0 | 383 |
| Grand Total | 29047 | 2257 | 4002 | 3548 | 0 | 0 | 3548 |

C) Time block 00.00hrs. to 24.00hrs. @ 0% allocation from Unallocated Quota w.e.f. 18.07.2015

| Name of the Stn | Installed capacity | Total Un-allocated | Basic Allocation | Basic Allocation at periphery | Allocation out of Unallocated Quota | Allocation out of Un-allocation Quota at Delhi periphery | Total allocation at Delhi periphery |
|---|--------------------|--------------------|------------------|-------------------------------|-------------------------------------|--|-------------------------------------|
| 1 | 2 | 3 | 4 | 5 | 6 | 7 | (8)=(5)+(7) |
| <u>NTPC STATIONS</u> | | | | | | | |
| Singrauli STPS | 2000 | 300 | 150 | 130 | 0 | 0 | 130 |
| Rihand-I | 1000 | 150 | 100 | 87 | 0 | 0 | 87 |
| Rihand Stage -II | 1000 | 150 | 126 | 109 | 0 | 0 | 109 |
| Rihand Stage -III | 1000 | 150 | 132 | 115 | 0 | 0 | 115 |
| ANTA GPS | 419 | 63 | 44 | 41 | 0 | 0 | 41 |
| Auriya GPS | 663.36 | 99 | 72 | 67 | 0 | 0 | 67 |
| Dadri GPS | 829.78 | 129 | 91 | 85 | 0 | 0 | 85 |
| Dadri NCTPS (Th) | 840 | 0 | 576 | 500 | 0 | 0 | 500 |
| Dadri NCTPS (Th) Stage-II | 980 | 147 | 735 | 639 | 0 | 0 | 639 |
| Unchahaar-I TPS | 420 | 20 | 24 | 21 | 0 | 0 | 21 |
| Unchahaar-II TPS | 420 | 63 | 47 | 41 | 0 | 0 | 41 |
| Unchahaar-III TPS | 210 | 31 | 29 | 25 | 0 | 0 | 25 |
| Koldam HEP | 800 | 120 | 56 | 53 | 0 | 0 | 53 |
| TOTAL | 10582 | 1422 | 2182 | 1913 | 0 | 0 | 1913 |
| <u>NHPC</u> | | | | | | | |
| Baira Suil HPS | 180 | 0 | 20 | 19 | 0 | 0 | 19 |
| Salal HPS | 690 | 0 | 80 | 76 | 0 | 0 | 76 |
| Tanakpur HEP | 94 | 0 | 12 | 11 | 0 | 0 | 11 |
| Chamera HEP | 540 | 0 | 43 | 41 | 0 | 0 | 41 |
| Chamera-II HEP | 300 | 54 | 40 | 38 | 0 | 0 | 38 |
| Chamera-III HEP | 231 | 35 | 29 | 28 | 0 | 0 | 28 |
| URI-I HEP | 480 | 0 | 53 | 50 | 0 | 0 | 50 |
| URI-II HEP | 240 | 0 | 32 | 31 | 0 | 0 | 31 |
| Sewa HEP | 120 | 18 | 16 | 15 | 0 | 0 | 15 |
| Dhaulti Ganga HEP | 280 | 42 | 37 | 35 | 0 | 0 | 35 |
| Dulhasti HEP | 390 | 58 | 50 | 48 | 0 | 0 | 48 |
| Parbati-III HEP | 520 | 66 | 66 | 63 | 0 | 0 | 63 |
| TOTAL | 4065 | 272 | 479 | 455 | 0 | 0 | 455 |
| <u>NPC</u> | | | | | | | |
| Narora APS | 440 | 64 | 47 | 41 | 0 | 0 | 41 |
| RAPP (C) | 440 | 64 | 56 | 49 | 0 | 0 | 49 |
| TOTAL | 880 | 128 | 103 | 89 | 0 | 0 | 89 |
| <u>SVJNL</u> | | | | | | | |
| Nathpa Jhakri HEP | 1500 | 149 | 142 | 135 | 0 | 0 | 135 |
| <u>THDC</u> | | | | | | | |
| Tehri Hydro | 1000 | 99 | 103 | 98 | 0 | 0 | 98 |
| Koteshwar HEP | 400 | 40 | 39 | 37 | 0 | 0 | 37 |
| TOTAL | 1400 | 139 | 142 | 135 | 0 | 0 | 135 |
| Total | 18427 | 2110 | 3048 | 2727 | 0 | 0 | 2727 |
| <u>Allocation from ER and Tala HEP</u> | | | | | | | |
| Farakka | 1600 | 0 | 22 | 19 | 0 | 0 | 19 |
| Kahalgaon | 840 | 0 | 51 | 43 | 0 | 0 | 43 |
| Talchar | 1000 | 0 | 0 | 0 | 0 | 0 | 0 |
| Tala HEP | 1020 | 153 | 30 | 25 | 0 | 0 | 25 |
| Kahalgaon-II | 1500 | 0 | 157 | 131 | 0 | 0 | 131 |
| Total ER | 5960 | 153 | 261 | 217 | 0 | 0 | 217 |
| <u>Joint Venture</u> | | | | | | | |
| Jhajjar TPS | 1500 | 114 | 304 | 273 | 0 | 0 | 273 |
| <u>Ultra Mega Projects</u> | | | | | | | |
| Sasan | 3960 | 0 | 446 | 383 | 0 | 0 | 383 |
| Grand Total | 29847 | 2377 | 4058 | 3601 | 0 | 0 | 3601 |

5 ALLOCATION OF POWER TO DISCOMS

A) ALLOCATION OF POWER TO VARIOUS LICENCEES AS PER ORDER OF DERC AND DECISION OF GNCTD FOR ALLOCATION OF CENTRAL SECTOR STATIONS (DADRI THERMAL & BTPS) AND STATE SECTOR GENERATING STATIONS w.e.f. 06.08.2013.

(Allocation In %)

(A) 10.00hrs. to 17.00hrs.

| SOURCES | LICENSEES | | | | | |
|--------------------------------------|-----------|------|--------|--------|--------|--------|
| | NDMC | MES | NDPL | BRPL | BYPL | TOTAL |
| 1. Central Sector without Dadri (Th) | 0 | 0 | 29.18 | 43.58 | 27.24 | 100.00 |
| 2. Dadri (Th) | 16.63 | 0 | 24.22 | 36.86 | 22.39 | 100.00 |
| 3. BTPS | 17.73 | 7.09 | 21.81 | 33.2 | 20.17 | 100.00 |
| 4. RPH | 0 | 0 | 29.025 | 44.133 | 26.842 | 100.00 |
| 5. GT | 0 | 0 | 29.02 | 44.16 | 26.82 | 100.00 |
| 6. Pragati | 30.3 | 0 | 20.22 | 30.78 | 18.7 | 100.00 |
| 7. DVC | 0 | 0 | 29.18 | 43.58 | 27.24 | 100.00 |
| 8. BAWANA CCGT* | 7.30 | 1.82 | 20.688 | 30.888 | 19.304 | 80.00 |

(B) 00.00hrs. to 10.00hrs. and 17.00hrs. to 24.00hrs.

| SOURCES | LICENSEES | | | | | |
|--------------------------------------|-----------|------|--------|--------|--------|--------|
| | NDMC | MES | NDPL | BRPL | BYPL | TOTAL |
| 1. Central Sector without Dadri (Th) | 0 | 0 | 29.18 | 43.58 | 27.24 | 100.00 |
| 2. Dadri (Th) | 16.53 | 0 | 24.22 | 36.86 | 22.39 | 100.00 |
| 3. BTPS | 17.73 | 7.09 | 21.81 | 33.2 | 20.17 | 100.00 |
| 4. RPH | 0 | 0 | 29.025 | 44.133 | 26.842 | 100.00 |
| 5. GT | 0 | 0 | 29.02 | 44.16 | 26.82 | 100.00 |
| 6. Pragati | 30.3 | 0 | 20.22 | 30.78 | 18.7 | 100.00 |
| 7. DVC | 0 | 0 | 29.18 | 43.58 | 27.24 | 100.00 |
| 8. BAWANA CCGT* | 7.30 | 1.82 | 20.688 | 30.888 | 19.304 | 80.00 |

* 20% POWER OF BAWANA CCGT ALLOCATED TO HARYANA (10%) & PUNJAB (10%)

**POWER AVAILABILITY-DEMAND POSITION AT THE TIME OF PEAK DEMAND
MET DURING AUGUST 2015**

All figures in MW

| Date | Time of peak demand | Generation within Delhi | | | | | | | | Import from the Grid | Schedule from the Grid | OD(-)/UD(+) | Demand met | Shedding | Un-Restricted Demand |
|------|---------------------|-------------------------|-----|------|---------|--------|--------|-----------------------|-------|----------------------|-------------------------|------------------------|------------|---------------------|----------------------|
| | | RPH | GT | PPCL | Rithala | Bawana | Towmcl | BTPS | Total | | | | | | |
| (1) | (2) | (3) | (4) | (5) | (6) | (7) | (8) | (9)= (3) to (8) | (10) | (11) | (12)= (11) - (10) | (13)= (11)+ (12) | (14) | (15)= (13)+ (14) | |
| 1 | 00.00.00 | 0 | 66 | 129 | 0 | -4 | 6 | 322 | 519 | 3660 | 3724 | -64 | 4179 | 0 | 4179 |
| 2 | 22.56.40 | 0 | 74 | 131 | 0 | -4 | 16 | 231 | 448 | 3974 | 3793 | 181 | 4422 | 0 | 4422 |
| 3 | 22.36.47 | 0 | 73 | 259 | 0 | -2 | 16 | 322 | 668 | 4276 | 4281 | -5 | 4944 | 0 | 4944 |
| 4 | 15.53.32 | 0 | 70 | 263 | 0 | -4 | 11 | 329 | 669 | 4531 | 4333 | 198 | 5200 | 24 | 5224 |
| 5 | 15.14.40 | 0 | 72 | 263 | 0 | -4 | 10 | 291 | 632 | 4459 | 4610 | -151 | 5091 | 5 | 5096 |
| 6 | 15.49.42 | 0 | 73 | 262 | 0 | -4 | 9 | 319 | 659 | 4225 | 4131 | 94 | 4884 | 0 | 4884 |
| 7 | 14.38.32 | 0 | 61 | 261 | 0 | -4 | 9 | 304 | 631 | 4355 | 4138 | 217 | 4986 | 6 | 4992 |
| 8 | 00:00:00 | 0 | 27 | 261 | 0 | -3 | 13 | 321 | 619 | 3760 | 3816 | -56 | 4379 | 0 | 4379 |
| 9 | 00.01.11 | 0 | 35 | 262 | 0 | -4 | 8 | 320 | 621 | 3633 | 3816 | -183 | 4254 | 0 | 4254 |
| 10 | 22.29.54 | 0 | 51 | 135 | 0 | -4 | 2 | 345 | 529 | 4277 | 4191 | 86 | 4806 | 0 | 4806 |
| 11 | 11.46.01 | 0 | 51 | 143 | 0 | -4 | 4 | 316 | 510 | 4171 | 4018 | 153 | 4681 | 0 | 4681 |
| 12 | 16.05.26 | 0 | 34 | 141 | 0 | -4 | 12 | 321 | 504 | 4261 | 4028 | 233 | 4765 | 179 | 4944 |
| 13 | 23.00.00 | 0 | 0 | 269 | 0 | -2 | 16 | 315 | 598 | 4411 | 4340 | 71 | 5009 | 0 | 5009 |
| 14 | 15.00.00 | 0 | 32 | 261 | 0 | -1 | 16 | 322 | 630 | 4232 | 4248 | -16 | 4862 | 0 | 4862 |
| 15 | 00.00.00 | 0 | 33 | 262 | 0 | -4 | 15 | 315 | 621 | 4049 | 4125 | -76 | 4670 | 0 | 4670 |
| 16 | 22.59.50 | 0 | 33 | -3 | 0 | -4 | 9 | 318 | 353 | 3914 | 3854 | 60 | 4267 | 6 | 4273 |
| 17 | 15.26.33 | 0 | 32 | 137 | 0 | -4 | 11 | 323 | 499 | 4318 | 4264 | 54 | 4817 | 1 | 4818 |
| 18 | 16.02.29 | 0 | 31 | 141 | 0 | -4 | 14 | 317 | 499 | 4409 | 4272 | 137 | 4908 | 0 | 4908 |
| 19 | 12:14:24 | 0 | 32 | 141 | 0 | -4 | 16 | 318 | 503 | 4400 | 4432 | -32 | 4903 | 0 | 4903 |
| 20 | 16.16.21 | 0 | 32 | 140 | 0 | -5 | 15 | 317 | 499 | 4415 | 4364 | 51 | 4914 | 12 | 4926 |
| 21 | 16.00.24 | 0 | 32 | 140 | 0 | -5 | 15 | 317 | 499 | 4487 | 4317 | 170 | 4986 | 1 | 4987 |
| 22 | 23.25.09 | 0 | 34 | 147 | 0 | -2 | 15 | 323 | 517 | 4122 | 4063 | 59 | 4639 | 0 | 4639 |
| 23 | 00.00.42 | 0 | 33 | 148 | 0 | -2 | 15 | 326 | 520 | 4037 | 3987 | 50 | 4557 | 0 | 4557 |
| 24 | 22.58.27 | 0 | 32 | 145 | 0 | 0 | 16 | 322 | 515 | 4467 | 4348 | 119 | 4982 | 0 | 4982 |
| 25 | 22.56.58 | 0 | 32 | 145 | 0 | -2 | 15 | 324 | 514 | 4715 | 4572 | 143 | 5229 | 4 | 5233 |
| 26 | 22.50.55 | 0 | 32 | 261 | 0 | -4 | 12 | 310 | 611 | 4663 | 4650 | 13 | 5274 | 9 | 5283 |
| 27 | 22.54.38 | 0 | 32 | 264 | 0 | -4 | 10 | 318 | 620 | 4814 | 4689 | 125 | 5434 | 4 | 5438 |
| 28 | 15.54.39 | 0 | 32 | 262 | 0 | -4 | 10 | 318 | 618 | 4771 | 4694 | 77 | 5389 | 0 | 5389 |
| 29 | 00.00.08 | 0 | 32 | 261 | 0 | -4 | 10 | 310 | 609 | 4523 | 4334 | 189 | 5132 | 3 | 5135 |
| 30 | 22.43.08 | 0 | 33 | 258 | 0 | -4 | 11 | 313 | 611 | 4483 | 4281 | 202 | 5094 | 125 | 5219 |
| 31 | 22.56.30 | 0 | 33 | 263 | 0 | -4 | 16 | 325 | 633 | 4664 | 4703 | -39 | 5297 | 2 | 5299 |

POWER AVAILABILITY- DEMAND POSITION AT THE TIME OF MAXIMUM UNRESTRICTED DEMAND DURING AUGUST 2015

| Date | Time of peak demand | Generation within Delhi | | | | | | | | Import from the Grid | Schedule from the Grid | OD(-)/UD(+) | Demand met | Shedding | Un-Restricted Demand |
|------|---------------------|-------------------------|-----|------|---------|--------|--------|------|----------------|----------------------|------------------------|------------------|-----------------|----------|----------------------|
| | | RPH | GT | PPCL | Rithala | Bawana | Towmcl | BTPS | Total | | | | | | |
| (1) | (2) | (3) | (4) | (5) | (6) | (7) | (8) | | (9)=(3) to (8) | (10) | (11) | (12)=(11) - (10) | (13)=(11)+ (12) | (14) | (15)=(13)+ (14) |
| 1 | 00.00.00 | 0 | 66 | 129 | 0 | -4 | 6 | 322 | 519 | 3660 | 3724 | -64 | 4179 | 0 | 4179 |
| 2 | 22.56.40 | 0 | 74 | 131 | 0 | -4 | 16 | 231 | 448 | 3974 | 3793 | 181 | 4422 | 0 | 4422 |
| 3 | 22.36.47 | 0 | 73 | 259 | 0 | -2 | 16 | 322 | 668 | 4276 | 4281 | -5 | 4944 | 0 | 4944 |
| 4 | 15.53.32 | 0 | 70 | 263 | 0 | -4 | 11 | 329 | 669 | 4531 | 4333 | 198 | 5200 | 24 | 5224 |
| 5 | 15.14.40 | 0 | 72 | 263 | 0 | -4 | 10 | 291 | 632 | 4459 | 4610 | -151 | 5091 | 5 | 5096 |
| 6 | 15.49.42 | 0 | 73 | 262 | 0 | -4 | 9 | 319 | 659 | 4225 | 4131 | 94 | 4884 | 0 | 4884 |
| 7 | 14.38.32 | 0 | 61 | 261 | 0 | -4 | 9 | 304 | 631 | 4355 | 4138 | 217 | 4986 | 6 | 4992 |
| 8 | 00:00:00 | 0 | 27 | 261 | 0 | -3 | 13 | 321 | 619 | 3760 | 3816 | -56 | 4379 | 0 | 4379 |
| 9 | 00.01.11 | 0 | 35 | 262 | 0 | -4 | 8 | 320 | 621 | 3633 | 3816 | -183 | 4254 | 0 | 4254 |
| 10 | 22.29.54 | 0 | 51 | 135 | 0 | -4 | 2 | 345 | 529 | 4277 | 4191 | 86 | 4806 | 0 | 4806 |
| 11 | 11.46.01 | 0 | 51 | 143 | 0 | -4 | 4 | 316 | 510 | 4171 | 4018 | 153 | 4681 | 0 | 4681 |
| 12 | 16.05.26 | 0 | 34 | 141 | 0 | -4 | 12 | 321 | 504 | 4261 | 4028 | 233 | 4765 | 179 | 4944 |
| 13 | 23.00.00 | 0 | 0 | 269 | 0 | -2 | 16 | 315 | 598 | 4411 | 4340 | 71 | 5009 | 0 | 5009 |
| 14 | 15.00.00 | 0 | 32 | 261 | 0 | -1 | 16 | 322 | 630 | 4232 | 4248 | -16 | 4862 | 0 | 4862 |
| 15 | 00.00.00 | 0 | 33 | 262 | 0 | -4 | 15 | 315 | 621 | 4049 | 4125 | -76 | 4670 | 0 | 4670 |
| 16 | 22.59.50 | 0 | 33 | -3 | 0 | -4 | 9 | 318 | 353 | 3914 | 3854 | 60 | 4267 | 6 | 4273 |
| 17 | 15.26.33 | 0 | 32 | 137 | 0 | -4 | 11 | 323 | 499 | 4318 | 4264 | 54 | 4817 | 1 | 4818 |
| 18 | 16.02.29 | 0 | 31 | 141 | 0 | -4 | 14 | 317 | 499 | 4409 | 4272 | 137 | 4908 | 0 | 4908 |
| 19 | 12:14:24 | 0 | 32 | 141 | 0 | -4 | 16 | 318 | 503 | 4400 | 4432 | -32 | 4903 | 0 | 4903 |
| 20 | 16.16.21 | 0 | 32 | 140 | 0 | -5 | 15 | 317 | 499 | 4415 | 4364 | 51 | 4914 | 12 | 4926 |
| 21 | 16.00.24 | 0 | 32 | 140 | 0 | -5 | 15 | 317 | 499 | 4487 | 4317 | 170 | 4986 | 1 | 4987 |
| 22 | 23.25.09 | 0 | 34 | 147 | 0 | -2 | 15 | 323 | 517 | 4122 | 4063 | 59 | 4639 | 0 | 4639 |
| 23 | 00.00.42 | 0 | 33 | 148 | 0 | -2 | 15 | 326 | 520 | 4037 | 3987 | 50 | 4557 | 0 | 4557 |
| 24 | 22.58.27 | 0 | 32 | 145 | 0 | 0 | 16 | 322 | 515 | 4467 | 4348 | 119 | 4982 | 0 | 4982 |
| 25 | 22.56.58 | 0 | 32 | 145 | 0 | -2 | 15 | 324 | 514 | 4715 | 4572 | 143 | 5229 | 4 | 5233 |
| 26 | 22.50.55 | 0 | 32 | 261 | 0 | -4 | 12 | 310 | 611 | 4663 | 4650 | 13 | 5274 | 9 | 5283 |
| 27 | 22.54.38 | 0 | 32 | 264 | 0 | -4 | 10 | 318 | 620 | 4814 | 4689 | 125 | 5434 | 4 | 5438 |
| 28 | 15.54.39 | 0 | 32 | 262 | 0 | -4 | 10 | 318 | 618 | 4771 | 4694 | 77 | 5389 | 0 | 5389 |
| 29 | 00.00.08 | 0 | 32 | 261 | 0 | -4 | 10 | 310 | 609 | 4523 | 4334 | 189 | 5132 | 3 | 5135 |
| 30 | 22.43.08 | 0 | 33 | 258 | 0 | -4 | 11 | 313 | 611 | 4483 | 4281 | 202 | 5094 | 125 | 5219 |
| 31 | 22.56.30 | 0 | 33 | 263 | 0 | -4 | 16 | 325 | 633 | 4664 | 4703 | -39 | 5297 | 2 | 5299 |

SOURCEWISE SCHEDULED DRAWL FROM NORTHERN GRID AS WELL AS AVAILABILITY WITHIN DELHI FOR AUGUST 2015

A) AVAILABILITY FROM GENCO AND PRAGATI STNs. (all fig in MUs)

| | |
|---|----------------|
| A (i) RPH | 0.000 |
| (ii) GT+STG | 30.922 |
| (iii) PRAGATI | 139.82 |
| (iv) RITHALA | 0.000 |
| (v) BAWANA CCGT | 0.000 |
| (vi) Timarpur ó Okhla | 10.730 |
| TOTAL | 180.734 |
| B) AVAILABILITY FROM BTPS | 228.110 |
| C) AUXILIARY CONSUMPTION OF GENERATING STNs. EXCLUDING BTPS | 11.499 |
| D) NET GENERATION AVAILABLE WITHIN DELHI(A+B-C) | 397.345 |

B) SOURCE WISE SCHEDULED DRAWL FROM THE NORTHERN GRID

| NAME OF THE STATION | AVAILABILITY AT POWER PLANT | AVAILABILITY AT DELHI PERIPHERY | ALLOCATION MADE BY NRLDC AT POWER PLANT | ALLOCATION MADE BY NRLDC AT DELHI PERIPHERY |
|---------------------|-----------------------------|---------------------------------|---|---|
| B/SUIL | 10.322 | 10.084 | 7.669 | 7.492 |
| SALAL | 53.348 | 52.084 | 40.013 | 39.064 |
| SASAN | 266.688 | 260.330 | 269.040 | 262.576 |
| TANKAPUR | 8.953 | 8.739 | 6.347 | 6.196 |
| CHAMERA | 31.167 | 30.424 | 23.249 | 22.695 |
| CHAMERA -II | 28.833 | 28.141 | 21.507 | 20.992 |
| CHAMERA -III | 17.078 | 16.654 | 12.478 | 12.166 |
| DHAULIGANGA | 25.113 | 24.522 | 18.731 | 18.291 |
| SEWA -2 | 17.420 | 16.981 | 6.081 | 5.941 |
| URI | 34.500 | 33.684 | 25.817 | 25.206 |
| URI-II | 20.974 | 20.478 | 21.086 | 20.587 |
| KOLDAM | 41.332 | 40.352 | 41.332 | 40.352 |
| KOTESHWAR | 19.632 | 19.168 | 19.201 | 18.750 |
| PARBATI3 | 22.280 | 21.752 | 21.237 | 20.734 |
| RAMPUR | 0.000 | 0.000 | 0.000 | 0.000 |
| MUNDRA_UMPP | 0.848 | 0.825 | 0.000 | 0.000 |
| ANTA (GAS) | 4.353 | 4.242 | 3.786 | 3.689 |
| ANTA (RLNG) | 26.603 | 25.978 | 0.000 | 0.000 |
| ANTA (LIQUID) | 0.000 | 0.000 | 0.000 | 0.000 |
| DADRI (GAS) | 27.257 | 26.604 | 20.427 | 19.936 |
| DADRI (RLNG) | 30.486 | 29.778 | 0.078 | 0.076 |
| DADRI (LIQUID) | 0.000 | 0.000 | 0.000 | 0.000 |
| AURAIYA (GAS) | 20.185 | 19.703 | 13.409 | 13.090 |
| AURAIYA (RLNG) | 31.218 | 30.476 | 0.000 | 0.000 |
| AURAIYA (LIQUID) | 0.099 | 0.096 | 0.035 | 0.034 |
| SINGRAULI | 95.691 | 93.415 | 90.222 | 88.052 |
| RIHAND -I | 61.058 | 59.619 | 50.805 | 49.596 |
| RIHAND -II | 65.207 | 63.618 | 50.728 | 49.475 |
| RIHAND -III | 50.884 | 49.657 | 41.619 | 40.611 |
| UNCHAHAHAR-I | 16.721 | 16.324 | 10.352 | 10.104 |
| UNCHAHAHAR-II | 34.625 | 33.797 | 22.219 | 21.689 |
| UNCHAHAHAR-III | 20.329 | 19.844 | 13.834 | 13.504 |
| DADRI (TH) | 356.820 | 348.430 | 183.203 | 178.906 |
| DADRI (TH) STAGE-II | 536.205 | 523.428 | 406.256 | 396.573 |
| NAPP | 28.781 | 28.099 | 29.743 | 29.035 |
| RAPP 'B' | 0.000 | 0.000 | 0.000 | 0.000 |
| RAPP 'C' | 33.508 | 32.717 | 34.650 | 33.828 |
| NATHPA JHAKRI | 97.542 | 95.205 | 75.946 | 74.128 |
| DULASTI | 34.874 | 34.046 | 34.874 | 34.046 |
| TEHRI | 53.574 | 52.317 | 56.633 | 55.298 |
| JHAJJAR | 216.303 | 211.154 | 47.000 | 45.885 |
| KHELGAON | 33.051 | 32.266 | 22.016 | 21.489 |
| KHELGAON-II | 75.259 | 73.471 | 59.037 | 57.636 |
| FARAKA | 11.991 | 11.701 | 8.492 | 8.287 |
| TALA | 25.959 | 25.334 | 23.713 | 23.149 |

| NAME OF THE STATION | AVAILABILITY AT POWER PLANT | AVAILABILITY AT DELHI PERIPHERY | ALLOCATION MADE BY NRLDC AT POWER PLANT | ALLOCATION MADE BY NRLDC AT DELHI PERIPHERY |
|-------------------------------|-----------------------------|---------------------------------|---|---|
| TALCHER | 0.000 | 0.000 | 0.000 | 0.000 |
| DVC | 229.616 | 227.798 | 227.798 | 222.363 |
| UTTAR PRADESH | 0.000 | 0.000 | 0.000 | 0.000 |
| TRIPUA | 0.000 | 0.000 | 0.000 | 0.000 |
| MEGHALAYA | 6.487 | 6.441 | 6.441 | 6.281 |
| ASSAM | 6.413 | 6.334 | 6.334 | 6.180 |
| DVC CTPS (BYPL) | 0.000 | 0.000 | 0.000 | 0.000 |
| DVC CTPS (NDPL) | 0.000 | 0.000 | 0.000 | 0.000 |
| METHON POWER(NDPL)LT-06 | 190.393 | 188.891 | 188.891 | 184.388 |
| DVC MEJIA (LT-08)(BYPL) | 68.848 | 68.304 | 68.304 | 66.671 |
| URS | 0.000 | 0.000 | 0.000 | 0.000 |
| JAMMU & KASHMIR | 150.806 | 149.337 | 149.337 | 145.774 |
| HIMACHAL PRADESH | 86.834 | 85.774 | 85.774 | 83.731 |
| PUNJAB | 0.000 | 0.000 | 0.000 | 0.000 |
| MADHYA PRADESH | 85.490 | 84.398 | 84.398 | 82.370 |
| HARYANA | 0.000 | 0.000 | 0.000 | 0.000 |
| DVC LT-9 | 0.000 | 0.000 | 0.000 | 0.000 |
| HARYANA (LT-05) | 8.556 | 8.511 | 8.511 | 8.296 |
| WEST BENGAL | 0.000 | 0.000 | 0.000 | 0.000 |
| ORISSA | 36.792 | 36.410 | 36.410 | 35.529 |
| RAJASTHAN(SOLAR) BRPL-LT36 | 3.231 | 3.168 | 3.168 | 3.092 |
| RAJASTHAN(SOLAR) BYPL - LT-35 | 3.231 | 3.168 | 3.168 | 3.092 |
| RAJASTHAN(SOLAR) TPDDL LT-31 | 3.231 | 3.168 | 3.168 | 3.092 |
| TO HARYANA | -16.779 | -17.007 | -17.007 | -17.383 |
| TO MEGHALAYA | 0.000 | 0.000 | 0.000 | 0.000 |
| TO UTTAR PRADESH | -2.328 | -2.377 | -2.377 | -2.439 |
| TO JAMMU & KASHMIR | 0.000 | 0.000 | 0.000 | 0.000 |
| TO PUNJAB | -11.698 | -11.808 | -11.808 | -12.089 |
| TO ASSAM | 0.000 | 0.000 | 0.000 | 0.000 |
| TO MADHYA PRADESH | 0.000 | 0.000 | 0.000 | 0.000 |
| TO KERALA | -1.157 | -1.187 | -1.187 | -1.217 |
| TO RAJASTHAN | 0.000 | 0.000 | 0.000 | 0.000 |
| TO WEST BENGAL | 0.000 | 0.000 | 0.000 | 0.000 |
| BTPS TO MP | 0.000 | 0.000 | 0.000 | 0.000 |
| TO HIMACHAL PRADESH | 0.000 | 0.000 | 0.000 | 0.000 |
| TO ORISSA | 0.000 | 0.000 | 0.000 | 0.000 |
| POWER EXCHANGE(IEX) | 159.523 | 155.726 | 159.523 | 155.726 |
| TO POWER EXCHANGE (IEX) | -42.858 | -43.913 | -42.858 | -43.913 |
| POWRER EXCHANGE(PX) | 0.000 | 0.000 | 0.000 | 0.000 |
| TO POWER EXCHANGE (PX) | -0.448 | -0.458 | -0.448 | -0.458 |
| TO SHARE PROJECT (HARYANA) | 0.000 | 0.000 | 0.000 | 0.000 |
| TO SHARE PROJECT (PUNJAB) | 0.000 | 0.000 | 0.000 | 0.000 |
| | | | | |
| TOTAL | 3351.253 | 3476.215 | 2788.406 | 2718.245 |

C) AGENCY WISE BREAKUP OF ENERGY SCHEDULED DRAW FROM THE GRID

| NAME OF THE STATION | AVAILABILITY AT POWER PLANT | AVAILABILITY AT DELHI PERIPHERY | ALLOCATION MADE BY NRLDC AT POWER PLANT | ALLOCATION MADE BY NRLDC AT DELHI PERIPHERY |
|----------------------------|-----------------------------|---------------------------------|---|---|
| NTPC - NR | 1419.073 | 1385.362 | 948.306 | 925.688 |
| NTPC - ER | 120.301 | 117.438 | 89.546 | 87.412 |
| NHPC | 304.863 | 297.591 | 239.089 | 233.410 |
| NPC | 62.289 | 60.816 | 64.393 | 62.864 |
| SASAN | 266.688 | 260.330 | 269.040 | 262.576 |
| KOTESHWAR | 19.632 | 19.168 | 19.201 | 18.750 |
| MUNDRA_UMPP | 0.848 | 0.825 | 0.000 | 0.000 |
| NATHPA JHAKRI | 97.542 | 95.205 | 75.946 | 74.128 |
| TEHRI | 53.574 | 52.317 | 56.633 | 55.298 |
| TALA | 25.959 | 25.334 | 23.713 | 23.149 |
| JHAJJAR | 216.303 | 211.154 | 47.000 | 45.885 |
| TALCHER | 0.000 | 0.000 | 0.000 | 0.000 |
| RAJASTHAN SOLAR(BRPL)T-36 | 3.231 | 3.168 | 3.168 | 3.092 |
| RAJASTHAN SOLAR(BYPL)T-35 | 3.231 | 3.168 | 3.168 | 3.092 |
| RAJASTHAN SOLAR(TPDDL)T-31 | 3.231 | 3.168 | 3.168 | 3.092 |
| DVC | 229.616 | 227.798 | 227.798 | 222.363 |
| UTTAR PRADESH | 0.000 | 0.000 | 0.000 | 0.000 |

| NAME OF THE STATION | AVAILABILITY AT POWER PLANT | AVAILABILITY AT DELHI PERIPHERY | ALLOCATION MADE BY NRLDC AT POWER PLANT | ALLOCATION MADE BY NRLDC AT DELHI PERIPHERY |
|---------------------------|-----------------------------|---------------------------------|---|---|
| TRIPURA | 0.000 | 0.000 | 0.000 | 0.000 |
| MEGHALAYA | 6.487 | 6.441 | 6.441 | 6.281 |
| ASSAM | 6.413 | 6.334 | 6.334 | 6.180 |
| DVC CTPS (BYPL) | 0.000 | 0.000 | 0.000 | 0.000 |
| DVC CTPS (NDPL) | 0.000 | 0.000 | 0.000 | 0.000 |
| METHON POWER (NDPL)-LT-06 | 190.393 | 188.891 | 188.891 | 184.388 |
| DVC MEJIA (LT-08)(BYPL) | 68.848 | 68.304 | 68.304 | 66.671 |
| URS | 0.000 | 0.000 | 0.000 | 0.000 |
| JAMMU & KASHMIR | 150.806 | 149.337 | 149.337 | 145.774 |
| HIMACHAL PRADESH | 86.834 | 85.774 | 85.774 | 83.731 |
| PUNJAB | 0.000 | 0.000 | 0.000 | 0.000 |
| MADHYA PRADESH | 85.490 | 84.398 | 84.398 | 82.370 |
| HARYANA | 0.000 | 0.000 | 0.000 | 0.000 |
| DVC (FOR NDPL) LT-09 | 0.000 | 0.000 | 0.000 | 0.000 |
| HARYANA (LT -05) | 8.556 | 8.511 | 8.511 | 8.296 |
| WEST BENGAL | 0.000 | 0.000 | 0.000 | 0.000 |
| ORISSA | 36.792 | 36.410 | 36.410 | 35.529 |
| POWER EXCHANGE(IEX) | 159.523 | 155.726 | 159.523 | 155.726 |
| POWER EXCHANGE(PX) | 0.000 | 0.000 | 0.000 | 0.000 |
| TOTAL | 3626.521 | 3552.965 | 2864.090 | 2795.744 |

D) AGENCY WISE BREAKUP OF ENERGY SCHEDULED BY NRLDC FOR EXPORT TO OTHER UTILITIES FROM DTL

| NAME OF THE STATION | AVAILABILITY AT POWER PLANT | AVAILABILITY AT PERIPHERY | ALLOCATION MADE BY NRLDC AT POWER PLANT | ALLOCATION MADE BY NRLDC AT POWER PERIPHERY |
|---|-----------------------------|---------------------------|---|---|
| TO HARYANA | -16.779 | -17.007 | -17.007 | -17.383 |
| TO MEGHALAYA | 0.000 | 0.000 | 0.000 | 0.000 |
| TO UTTAR PRADESH | -2.328 | -2.377 | -2.377 | -2.439 |
| TO JAMMU & KASHMIR | 0.000 | 0.000 | 0.000 | 0.000 |
| TO ASSAM | 0.000 | 0.000 | 0.000 | 0.000 |
| TO PUNJAB | -11.698 | -11.808 | -11.808 | -12.089 |
| TO MADHYA PRADESH | 0.000 | 0.000 | 0.000 | 0.000 |
| TO KERALA | -1.157 | -1.187 | -1.187 | -1.217 |
| TO RAJASTHAN | 0.000 | 0.000 | 0.000 | 0.000 |
| TO WEST BENGAL | 0.000 | 0.000 | 0.000 | 0.000 |
| BTPS TO MP | 0.000 | 0.000 | 0.000 | 0.000 |
| TO HIMACHAL PRADESH | 0.000 | 0.000 | 0.000 | 0.000 |
| TO ORISSA | 0.000 | 0.000 | 0.000 | 0.000 |
| TO POWER EXCHANGE (IEX) | -42.858 | -43.913 | -42.858 | -43.913 |
| TO POWER EXCHANGE (PX) | -0.448 | -0.458 | -0.448 | -0.458 |
| TO SHARE PROJECT (HARYANA) | 0.000 | 0.000 | 0.000 | 0.000 |
| TO SHARE PROJECT (PUNJAB) | 0.000 | 0.000 | 0.000 | 0.000 |
| TOTAL | -75.268 | -76.750 | -75.684 | -77.499 |
| TOTAL SCHEDULED DRAWAL FROM THE GRID | 3551.253 | 3476.215 | 2788.406 | 2718.245 |

| | | |
|---|-------------------------------------|--|
| TOTAL CONSUMPTION INCLUDING AUX. OF GENERATING STNs. EXCLUDING BTPS | | 3089.509 |
| NET CONSUMPTION | | 3078.010 |
| AVAILABILITY WITHIN DELHI | | 397.345 |
| ACTUAL DRAWAL FROM THE GRID | | 2680.665 |
| OVER DRAWAL(+)/UNDER DRAWAL(-) FROM THE GRID ON THE BASIS OF SCHEDULED ALLOCATION MADE BY NRLDC TO DELHI AT PERIPHERY | | -37.580 |
| LOAD SHEDDING | | 3.514 |
| UNRESTRICTED DEMAND (GROSS) | | 3093.023 |
| UNRESTRICTED DEMAND (NET) | | 3081.524 |
| MAX. NET CONSUMPTION | | 112.083 ON 28.08.2015 |
| MAX. LOAD SHEDDING | | 322MW ON 10.08.2015 AT 19.58HRS. |
| PEAK LOAD | Peak Demand during the month | SHEDDING AT PEAK TIME |
| DAY PEAK | 5389MW AT 15.54.39HRS ON 28.08.2015 | 0 MW |
| EVENING PEAK | 5434MW AT 22.54.38HRS ON 27.08.2015 | 4 MW |
| P.L.F. OF GENCO AND PRAGATI STNs. | RPH | 0.00% |
| | GT | 15.39% |
| | PRAGATI | 56.65% |
| | RITHALA | 0.00% |
| | BAWANA | 0.00% |
| | Timarpur Okhla | 90.14% |

| DATE | No. of Under Freq. Relay Operated | Shedding due to under frequency relay operation in MUs | | | | | Shedding due to Grid Restrictions (Over drawal / low freq.) | | | | |
|--------------|-----------------------------------|--|--------------|--------------|--------------|--------------|---|--------------|--------------|--------------|--------------|
| | | BSES | | NDPL | NDMC | TOTAL | BSES | | NDPL | NDMC | MES |
| | | BYPL | BRPL | | | | BYPL | BRPL | | | |
| 1 | 2 | 3 | 4 | 5 | 6 | 7=3 to 6 | 8 | 9 | 10 | 11 | 12 |
| 01.Aug.15 | 0 | 0.000 | 0.000 | 0.000 | 0.000 | 0.000 | 0.000 | 0.000 | 0.024 | 0.000 | 0.000 |
| 02.Aug.15 | 0 | 0.000 | 0.000 | 0.000 | 0.000 | 0.000 | 0.000 | 0.000 | 0.000 | 0.000 | 0.000 |
| 03.Aug.15 | 0 | 0.000 | 0.000 | 0.000 | 0.000 | 0.000 | 0.000 | 0.000 | 0.004 | 0.000 | 0.000 |
| 04.Aug.15 | 0 | 0.000 | 0.000 | 0.000 | 0.000 | 0.000 | 0.000 | 0.174 | 0.032 | 0.000 | 0.000 |
| 05.Aug.15 | 0 | 0.000 | 0.000 | 0.000 | 0.000 | 0.000 | 0.000 | 0.000 | 0.000 | 0.000 | 0.000 |
| 06.Aug.15 | 0 | 0.000 | 0.000 | 0.000 | 0.000 | 0.000 | 0.000 | 0.000 | 0.000 | 0.000 | 0.000 |
| 07.Aug.15 | 0 | 0.000 | 0.000 | 0.000 | 0.000 | 0.000 | 0.000 | 0.000 | 0.000 | 0.000 | 0.000 |
| 08.Aug.15 | 0 | 0.000 | 0.000 | 0.000 | 0.000 | 0.000 | 0.000 | 0.020 | 0.000 | 0.000 | 0.000 |
| 09.Aug.15 | 0 | 0.000 | 0.000 | 0.000 | 0.000 | 0.000 | 0.000 | 0.000 | 0.000 | 0.000 | 0.000 |
| 10.Aug.15 | 0 | 0.000 | 0.000 | 0.000 | 0.000 | 0.000 | 0.000 | 0.334 | 0.000 | 0.008 | 0.000 |
| 11.Aug.15 | 0 | 0.000 | 0.000 | 0.000 | 0.000 | 0.000 | 0.000 | 0.000 | 0.000 | 0.000 | 0.000 |
| 12.Aug.15 | 0 | 0.000 | 0.000 | 0.000 | 0.000 | 0.000 | 0.000 | 0.015 | 0.014 | 0.000 | 0.000 |
| 13.Aug.15 | 0 | 0.000 | 0.000 | 0.000 | 0.000 | 0.000 | 0.000 | 0.021 | 0.016 | 0.000 | 0.000 |
| 14.Aug.15 | 0 | 0.000 | 0.000 | 0.000 | 0.000 | 0.000 | 0.000 | 0.000 | 0.000 | 0.000 | 0.000 |
| 15.Aug.15 | 0 | 0.000 | 0.000 | 0.000 | 0.000 | 0.000 | 0.000 | 0.000 | 0.000 | 0.000 | 0.000 |
| 16.Aug.15 | 0 | 0.000 | 0.000 | 0.000 | 0.000 | 0.000 | 0.000 | 0.000 | 0.000 | 0.000 | 0.000 |
| 17.Aug.15 | 0 | 0.000 | 0.000 | 0.000 | 0.000 | 0.000 | 0.000 | 0.018 | 0.000 | 0.000 | 0.000 |
| 18.Aug.15 | 0 | 0.000 | 0.000 | 0.000 | 0.000 | 0.000 | 0.000 | 0.000 | 0.022 | 0.000 | 0.000 |
| 19.Aug.15 | 0 | 0.000 | 0.000 | 0.000 | 0.000 | 0.000 | 0.000 | 0.000 | 0.000 | 0.000 | 0.000 |
| 20.Aug.15 | 0 | 0.000 | 0.000 | 0.000 | 0.000 | 0.000 | 0.000 | 0.000 | 0.000 | 0.000 | 0.000 |
| 21.Aug.15 | 0 | 0.000 | 0.000 | 0.000 | 0.000 | 0.000 | 0.000 | 0.000 | 0.000 | 0.000 | 0.000 |
| 22.Aug.15 | 0 | 0.000 | 0.000 | 0.000 | 0.000 | 0.000 | 0.000 | 0.000 | 0.004 | 0.000 | 0.000 |
| 23.Aug.15 | 0 | 0.000 | 0.000 | 0.000 | 0.000 | 0.000 | 0.000 | 0.000 | 0.005 | 0.000 | 0.000 |
| 24.Aug.15 | 0 | 0.000 | 0.000 | 0.000 | 0.000 | 0.000 | 0.000 | 0.189 | 0.012 | 0.000 | 0.000 |
| 25.Aug.15 | 0 | 0.000 | 0.000 | 0.000 | 0.000 | 0.000 | 0.000 | 0.000 | 0.000 | 0.000 | 0.000 |
| 26.Aug.15 | 0 | 0.000 | 0.000 | 0.000 | 0.000 | 0.000 | 0.000 | 0.055 | 0.000 | 0.000 | 0.000 |
| 27.Aug.15 | 0 | 0.000 | 0.000 | 0.000 | 0.000 | 0.000 | 0.000 | 0.000 | 0.000 | 0.000 | 0.000 |
| 28.Aug.15 | 0 | 0.000 | 0.000 | 0.000 | 0.000 | 0.000 | 0.000 | 0.000 | 0.000 | 0.000 | 0.000 |
| 29.Aug.15 | 0 | 0.000 | 0.000 | 0.000 | 0.000 | 0.000 | 0.000 | 0.014 | 0.000 | 0.000 | 0.000 |
| 30.Aug.15 | 0 | 0.000 | 0.000 | 0.000 | 0.000 | 0.000 | 0.042 | 0.129 | 0.030 | 0.002 | 0.000 |
| 31.Aug.15 | 0 | 0.000 | 0.000 | 0.000 | 0.000 | 0.000 | 0.000 | 0.000 | 0.000 | 0.000 | 0.000 |
| TOTAL | 0 | 0.000 | 0.000 | 0.000 | 0.000 | 0.000 | 0.042 | 0.969 | 0.163 | 0.010 | 0.000 |

| Date | Shedding due to Transmission/Grid Constraints in Central Sector Stations / TTC / ATC VOILATION | | | | DUE TO NEW GRID CODE REGULATION DEVIATION | | | Shedding due to Transmission/Grid Constraints in Central sector stations | | | | Total | Total shedding due to grid restrictions | |
|--------------|--|--------------|--------------|--------------|---|--------------|--------------|--|--------------|--------------|--------------|--------------|---|--------------|
| | BSES | | NDPL | NDMC | BSES | | TPDDL | BSES | | TPDDL | NDMC | | | |
| | BYPL | BRPL | | | BYPL | BRPL | | BYPL | BRPL | | | | | |
| | 13 | 14 | 15 | 16 | 17 | 18 | 19 | 20 | 21 | 22 | 23 | 24=8 to 23 | 25=7+24 | |
| 01.Aug.15 | 0.000 | 0.000 | 0.000 | 0.000 | 0.000 | 0.000 | 0.000 | 0.000 | 0.000 | 0.000 | 0.000 | 0.000 | 0.024 | 0.024 |
| 02.Aug.15 | 0.000 | 0.000 | 0.000 | 0.000 | 0.000 | 0.000 | 0.000 | 0.000 | 0.000 | 0.000 | 0.000 | 0.000 | 0.000 | 0.000 |
| 03.Aug.15 | 0.000 | 0.000 | 0.000 | 0.000 | 0.000 | 0.000 | 0.000 | 0.000 | 0.000 | 0.000 | 0.000 | 0.000 | 0.004 | 0.004 |
| 04.Aug.15 | 0.000 | 0.000 | 0.000 | 0.000 | 0.000 | 0.000 | 0.000 | 0.000 | 0.000 | 0.000 | 0.000 | 0.000 | 0.206 | 0.206 |
| 05.Aug.15 | 0.000 | 0.000 | 0.000 | 0.000 | 0.000 | 0.000 | 0.000 | 0.000 | 0.000 | 0.000 | 0.000 | 0.000 | 0.000 | 0.000 |
| 06.Aug.15 | 0.000 | 0.000 | 0.000 | 0.000 | 0.000 | 0.000 | 0.000 | 0.000 | 0.000 | 0.000 | 0.000 | 0.000 | 0.000 | 0.000 |
| 07.Aug.15 | 0.000 | 0.000 | 0.000 | 0.000 | 0.000 | 0.000 | 0.000 | 0.000 | 0.000 | 0.000 | 0.000 | 0.000 | 0.000 | 0.000 |
| 08.Aug.15 | 0.000 | 0.000 | 0.000 | 0.000 | 0.000 | 0.000 | 0.000 | 0.000 | 0.000 | 0.000 | 0.000 | 0.000 | 0.020 | 0.020 |
| 09.Aug.15 | 0.000 | 0.000 | 0.000 | 0.000 | 0.000 | 0.000 | 0.000 | 0.000 | 0.000 | 0.000 | 0.000 | 0.000 | 0.000 | 0.000 |
| 10.Aug.15 | 0.000 | 0.000 | 0.000 | 0.000 | 0.000 | 0.000 | 0.000 | 0.000 | 0.000 | 0.000 | 0.000 | 0.000 | 0.342 | 0.342 |
| 11.Aug.15 | 0.000 | 0.000 | 0.000 | 0.000 | 0.000 | 0.000 | 0.000 | 0.000 | 0.000 | 0.000 | 0.000 | 0.000 | 0.000 | 0.000 |
| 12.Aug.15 | 0.000 | 0.000 | 0.000 | 0.000 | 0.000 | 0.000 | 0.000 | 0.000 | 0.000 | 0.000 | 0.000 | 0.000 | 0.029 | 0.029 |
| 13.Aug.15 | 0.000 | 0.000 | 0.000 | 0.000 | 0.000 | 0.000 | 0.000 | 0.000 | 0.000 | 0.000 | 0.000 | 0.000 | 0.037 | 0.037 |
| 14.Aug.15 | 0.000 | 0.000 | 0.000 | 0.000 | 0.000 | 0.000 | 0.000 | 0.000 | 0.000 | 0.000 | 0.000 | 0.000 | 0.000 | 0.000 |
| 15.Aug.15 | 0.000 | 0.000 | 0.000 | 0.000 | 0.000 | 0.000 | 0.000 | 0.000 | 0.000 | 0.000 | 0.000 | 0.000 | 0.000 | 0.000 |
| 16.Aug.15 | 0.000 | 0.000 | 0.000 | 0.000 | 0.000 | 0.000 | 0.000 | 0.000 | 0.000 | 0.000 | 0.000 | 0.000 | 0.000 | 0.000 |
| 17.Aug.15 | 0.000 | 0.000 | 0.000 | 0.000 | 0.000 | 0.000 | 0.000 | 0.000 | 0.000 | 0.000 | 0.000 | 0.000 | 0.018 | 0.018 |
| 18.Aug.15 | 0.000 | 0.000 | 0.000 | 0.000 | 0.000 | 0.000 | 0.000 | 0.000 | 0.000 | 0.000 | 0.000 | 0.000 | 0.022 | 0.022 |
| 19.Aug.15 | 0.000 | 0.000 | 0.000 | 0.000 | 0.000 | 0.000 | 0.000 | 0.000 | 0.000 | 0.000 | 0.000 | 0.000 | 0.000 | 0.000 |
| 20.Aug.15 | 0.000 | 0.000 | 0.000 | 0.000 | 0.000 | 0.000 | 0.000 | 0.000 | 0.000 | 0.000 | 0.000 | 0.000 | 0.000 | 0.000 |
| 21.Aug.15 | 0.000 | 0.000 | 0.000 | 0.000 | 0.000 | 0.000 | 0.000 | 0.000 | 0.000 | 0.000 | 0.000 | 0.000 | 0.000 | 0.000 |
| 22.Aug.15 | 0.000 | 0.000 | 0.000 | 0.000 | 0.000 | 0.000 | 0.000 | 0.000 | 0.000 | 0.000 | 0.000 | 0.000 | 0.004 | 0.004 |
| 23.Aug.15 | 0.000 | 0.000 | 0.000 | 0.000 | 0.000 | 0.000 | 0.000 | 0.000 | 0.000 | 0.000 | 0.000 | 0.000 | 0.005 | 0.005 |
| 24.Aug.15 | 0.000 | 0.000 | 0.000 | 0.000 | 0.000 | 0.000 | 0.000 | 0.000 | 0.000 | 0.000 | 0.000 | 0.000 | 0.201 | 0.201 |
| 25.Aug.15 | 0.000 | 0.000 | 0.000 | 0.000 | 0.000 | 0.000 | 0.000 | 0.000 | 0.000 | 0.000 | 0.000 | 0.000 | 0.000 | 0.000 |
| 26.Aug.15 | 0.000 | 0.000 | 0.000 | 0.000 | 0.000 | 0.000 | 0.000 | 0.000 | 0.000 | 0.000 | 0.000 | 0.000 | 0.055 | 0.055 |
| 27.Aug.15 | 0.000 | 0.000 | 0.000 | 0.000 | 0.000 | 0.000 | 0.000 | 0.000 | 0.000 | 0.000 | 0.000 | 0.000 | 0.000 | 0.000 |
| 28.Aug.15 | 0.000 | 0.000 | 0.000 | 0.000 | 0.000 | 0.000 | 0.000 | 0.000 | 0.000 | 0.000 | 0.000 | 0.000 | 0.000 | 0.000 |
| 29.Aug.15 | 0.000 | 0.000 | 0.000 | 0.000 | 0.000 | 0.000 | 0.000 | 0.000 | 0.000 | 0.000 | 0.000 | 0.000 | 0.014 | 0.014 |
| 30.Aug.15 | 0.000 | 0.000 | 0.000 | 0.000 | 0.000 | 0.000 | 0.000 | 0.000 | 0.000 | 0.000 | 0.000 | 0.000 | 0.203 | 0.203 |
| 31.Aug.15 | 0.000 | 0.000 | 0.000 | 0.000 | 0.000 | 0.000 | 0.000 | 0.000 | 0.000 | 0.000 | 0.000 | 0.000 | 0.000 | 0.000 |
| TOTAL | 0.000 | 0.000 | 0.000 | 0.000 | 0.000 | 0.000 | 0.000 | 0.000 | 0.000 | 0.000 | 0.000 | 0.000 | 1.184 | 1.184 |

| Date | DUE TO T&D CONSTRAINTS IN DELHI SYSTEM | | | | | | | | |
|--------------|--|--------------|--------------|--------------|--------------|--------------|--------------|--------------|--------------|
| | DTL | | | | | DISCOMS | | | |
| | BSES | | NDPL | NDMC | MES | BSES | | NDPL | NDMC |
| | BYPL | BRPL | | | | BYPL | BRPL | | |
| | 26 | 27 | 28 | 29 | 30 | 31 | 32 | 33 | 34 |
| 01.Aug.15 | 0.000 | 0.003 | 0.039 | 0.000 | 0.000 | 0.000 | 0.023 | 0.000 | 0.000 |
| 02.Aug.15 | 0.000 | 0.004 | 0.000 | 0.000 | 0.000 | 0.000 | 0.027 | 0.029 | 0.000 |
| 03.Aug.15 | 0.000 | 0.000 | 0.006 | 0.000 | 0.000 | 0.003 | 0.000 | 0.007 | 0.000 |
| 04.Aug.15 | 0.000 | 0.000 | 0.021 | 0.000 | 0.000 | 0.020 | 0.015 | 0.000 | 0.000 |
| 05.Aug.15 | 0.000 | 0.000 | 0.001 | 0.000 | 0.000 | 0.023 | 0.035 | 0.002 | 0.000 |
| 06.Aug.15 | 0.000 | 0.032 | 0.000 | 0.000 | 0.000 | 0.003 | 0.043 | 0.000 | 0.000 |
| 07.Aug.15 | 0.062 | 0.000 | 0.000 | 0.000 | 0.000 | 0.000 | 0.024 | 0.003 | 0.000 |
| 08.Aug.15 | 0.000 | 0.000 | 0.000 | 0.000 | 0.000 | 0.000 | 0.002 | 0.008 | 0.000 |
| 09.Aug.15 | 0.000 | 0.000 | 0.013 | 0.000 | 0.000 | 0.000 | 0.004 | 0.001 | 0.000 |
| 10.Aug.15 | 0.000 | 0.000 | 0.000 | 0.000 | 0.000 | 0.046 | 0.007 | 0.000 | 0.000 |
| 11.Aug.15 | 0.000 | 0.000 | 0.000 | 0.000 | 0.000 | 0.000 | 0.000 | 0.007 | 0.000 |
| 12.Aug.15 | 0.212 | 0.000 | 0.001 | 0.000 | 0.000 | 0.010 | 0.072 | 0.021 | 0.000 |
| 13.Aug.15 | 0.012 | 0.028 | 0.000 | 0.000 | 0.000 | 0.003 | 0.013 | 0.002 | 0.000 |
| 14.Aug.15 | 0.000 | 0.007 | 0.000 | 0.000 | 0.000 | 0.000 | 0.029 | 0.000 | 0.000 |
| 15.Aug.15 | 0.000 | 0.000 | 0.000 | 0.000 | 0.000 | 0.002 | 0.008 | 0.000 | 0.000 |
| 16.Aug.15 | 0.000 | 0.000 | 0.000 | 0.000 | 0.000 | 0.000 | 0.044 | 0.000 | 0.000 |
| 17.Aug.15 | 0.000 | 0.000 | 0.000 | 0.000 | 0.000 | 0.006 | 0.000 | 0.002 | 0.000 |
| 18.Aug.15 | 0.000 | 0.007 | 0.000 | 0.000 | 0.000 | 0.017 | 0.043 | 0.003 | 0.000 |
| 19.Aug.15 | 0.021 | 0.005 | 0.007 | 0.000 | 0.000 | 0.016 | 0.032 | 0.002 | 0.000 |
| 20.Aug.15 | 0.004 | 0.005 | 0.034 | 0.000 | 0.000 | 0.000 | 0.019 | 0.092 | 0.000 |
| 21.Aug.15 | 0.000 | 0.000 | 0.001 | 0.000 | 0.000 | 0.039 | 0.025 | 0.001 | 0.000 |
| 22.Aug.15 | 0.000 | 0.000 | 0.000 | 0.000 | 0.000 | 0.004 | 0.008 | 0.010 | 0.000 |
| 23.Aug.15 | 0.038 | 0.000 | 0.000 | 0.000 | 0.000 | 0.129 | 0.015 | 0.000 | 0.000 |
| 24.Aug.15 | 0.027 | 0.002 | 0.000 | 0.000 | 0.000 | 0.039 | 0.008 | 0.002 | 0.000 |
| 25.Aug.15 | 0.004 | 0.012 | 0.000 | 0.000 | 0.000 | 0.006 | 0.014 | 0.001 | 0.000 |
| 26.Aug.15 | 0.000 | 0.088 | 0.014 | 0.000 | 0.000 | 0.029 | 0.020 | 0.000 | 0.000 |
| 27.Aug.15 | 0.000 | 0.000 | 0.013 | 0.000 | 0.000 | 0.000 | 0.024 | 0.010 | 0.000 |
| 28.Aug.15 | 0.000 | 0.007 | 0.000 | 0.000 | 0.000 | 0.004 | 0.022 | 0.000 | 0.000 |
| 29.Aug.15 | 0.000 | 0.061 | 0.002 | 0.000 | 0.000 | 0.000 | 0.025 | 0.000 | 0.000 |
| 30.Aug.15 | 0.000 | 0.000 | 0.000 | 0.000 | 0.000 | 0.027 | 0.117 | 0.000 | 0.000 |
| 31.Aug.15 | 0.000 | 0.000 | 0.001 | 0.000 | 0.000 | 0.000 | 0.007 | 0.000 | 0.000 |
| TOTAL | 0.380 | 0.261 | 0.153 | 0.000 | 0.000 | 0.426 | 0.725 | 0.203 | 0.000 |

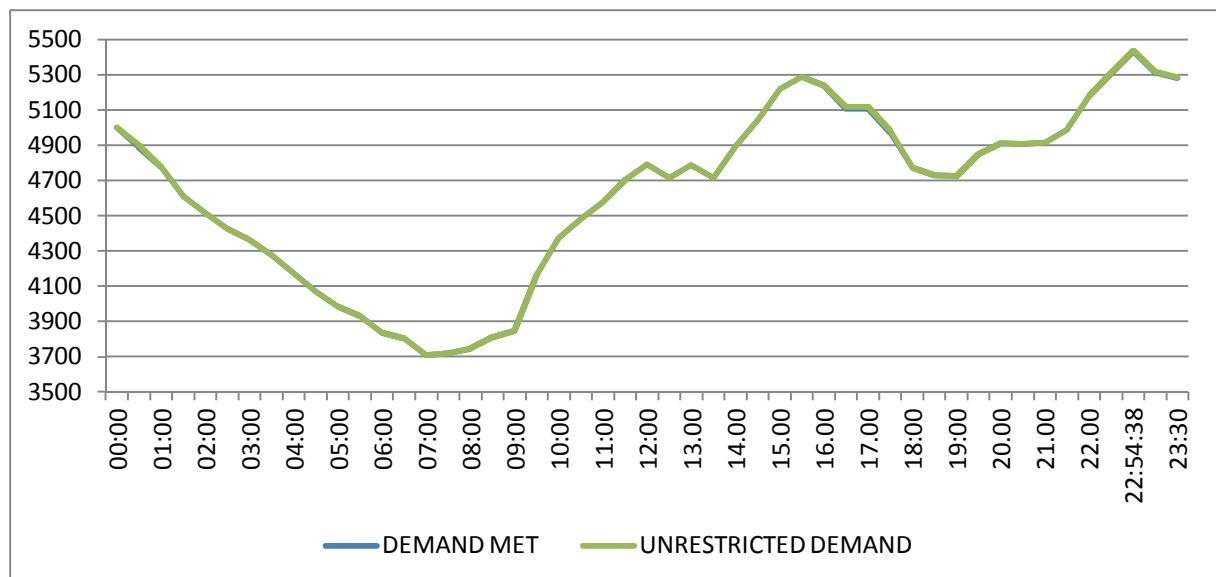
| DATE | OTHER AGENCIES LIKE GENCO, BBMB, BTPS ETC. | | | | THEFT PRONE SHEDDING | | | TOTAL SHEDDING DUE TO T&D CONSTS. & THEFT PRONE | GRAND TOTAL |
|--------------|---|--------------|--------------|--------------|----------------------|--------------|--------------|---|----------------|
| | BSES | | NDPL | NDMC | BSES | | NDPL | | |
| | BYPL | BRPL | | | BYPL | BRPL | | | |
| 1 | 35 | 36 | 37 | 38 | 39 | 40 | 41 | 42= 26 to 41 | 43 = 25 + 42 |
| 01.Aug.15 | 0.000 | 0.000 | 0.000 | 0.000 | 0.000 | 0.000 | 0.008 | 0.073 | 0.097 |
| 02.Aug.15 | 0.000 | 0.000 | 0.000 | 0.000 | 0.000 | 0.000 | 0.000 | 0.060 | 0.060 |
| 03.Aug.15 | 0.000 | 0.000 | 0.000 | 0.000 | 0.000 | 0.000 | 0.000 | 0.016 | 0.020 |
| 04.Aug.15 | 0.000 | 0.000 | 0.000 | 0.000 | 0.000 | 0.000 | 0.007 | 0.063 | 0.269 |
| 05.Aug.15 | 0.000 | 0.000 | 0.000 | 0.000 | 0.000 | 0.000 | 0.000 | 0.061 | 0.061 |
| 06.Aug.15 | 0.000 | 0.000 | 0.000 | 0.000 | 0.000 | 0.000 | 0.000 | 0.078 | 0.078 |
| 07.Aug.15 | 0.000 | 0.000 | 0.000 | 0.000 | 0.000 | 0.000 | 0.002 | 0.091 | 0.091 |
| 08.Aug.15 | 0.000 | 0.000 | 0.000 | 0.000 | 0.000 | 0.000 | 0.009 | 0.019 | 0.039 |
| 09.Aug.15 | 0.000 | 0.000 | 0.000 | 0.000 | 0.000 | 0.000 | 0.001 | 0.019 | 0.019 |
| 10.Aug.15 | 0.000 | 0.000 | 0.000 | 0.000 | 0.000 | 0.000 | 0.016 | 0.069 | 0.411 |
| 11.Aug.15 | 0.000 | 0.000 | 0.000 | 0.000 | 0.000 | 0.000 | 0.006 | 0.013 | 0.013 |
| 12.Aug.15 | 0.000 | 0.000 | 0.000 | 0.000 | 0.000 | 0.000 | 0.000 | 0.316 | 0.345 |
| 13.Aug.15 | 0.000 | 0.000 | 0.000 | 0.000 | 0.000 | 0.000 | 0.024 | 0.082 | 0.119 |
| 14.Aug.15 | 0.000 | 0.000 | 0.000 | 0.000 | 0.000 | 0.000 | 0.002 | 0.038 | 0.038 |
| 15.Aug.15 | 0.000 | 0.000 | 0.000 | 0.000 | 0.000 | 0.000 | 0.002 | 0.012 | 0.012 |
| 16.Aug.15 | 0.000 | 0.000 | 0.000 | 0.000 | 0.000 | 0.000 | 0.002 | 0.046 | 0.046 |
| 17.Aug.15 | 0.000 | 0.000 | 0.000 | 0.000 | 0.000 | 0.000 | 0.002 | 0.010 | 0.028 |
| 18.Aug.15 | 0.000 | 0.000 | 0.000 | 0.000 | 0.000 | 0.000 | 0.012 | 0.082 | 0.104 |
| 19.Aug.15 | 0.000 | 0.000 | 0.000 | 0.000 | 0.000 | 0.000 | 0.000 | 0.083 | 0.083 |
| 20.Aug.15 | 0.000 | 0.000 | 0.000 | 0.000 | 0.000 | 0.000 | 0.000 | 0.154 | 0.154 |
| 21.Aug.15 | 0.000 | 0.000 | 0.000 | 0.000 | 0.000 | 0.000 | 0.002 | 0.068 | 0.068 |
| 22.Aug.15 | 0.000 | 0.000 | 0.000 | 0.000 | 0.000 | 0.000 | 0.012 | 0.034 | 0.038 |
| 23.Aug.15 | 0.000 | 0.000 | 0.000 | 0.000 | 0.000 | 0.000 | 0.003 | 0.185 | 0.190 |
| 24.Aug.15 | 0.000 | 0.000 | 0.000 | 0.000 | 0.000 | 0.000 | 0.011 | 0.089 | 0.290 |
| 25.Aug.15 | 0.000 | 0.000 | 0.000 | 0.000 | 0.000 | 0.000 | 0.004 | 0.041 | 0.041 |
| 26.Aug.15 | 0.000 | 0.000 | 0.000 | 0.000 | 0.000 | 0.000 | 0.020 | 0.171 | 0.226 |
| 27.Aug.15 | 0.000 | 0.000 | 0.000 | 0.000 | 0.000 | 0.000 | 0.000 | 0.047 | 0.047 |
| 28.Aug.15 | 0.000 | 0.000 | 0.000 | 0.000 | 0.000 | 0.000 | 0.002 | 0.035 | 0.035 |
| 29.Aug.15 | 0.000 | 0.000 | 0.000 | 0.000 | 0.000 | 0.000 | 0.002 | 0.090 | 0.104 |
| 30.Aug.15 | 0.000 | 0.000 | 0.000 | 0.000 | 0.000 | 0.000 | 0.031 | 0.175 | 0.378 |
| 31.Aug.15 | 0.000 | 0.000 | 0.000 | 0.000 | 0.000 | 0.000 | 0.002 | 0.010 | 0.010 |
| TOTAL | 0.000 | 0.000 | 0.000 | 0.000 | 0.000 | 0.000 | 0.182 | 2.330 | 3.514 |

| DATE | (NET CONS.) | MAXI. DEMAND MET DURING THE DAY | TIME OF OCCURRENCE OF MAX DEMAND | SHEDDING AT THIS TIME | UN-RESTRICTED DEMAND | MAXIMUM UN-RESTRICTED DEMAND DURING THE DAY | TIME OF MAX. UN-REST. DEMAND | DEMAND AT THAT TIME | SHEDDING AT THAT TIME |
|--------------|-----------------|---------------------------------|----------------------------------|-----------------------|----------------------|---|------------------------------|---------------------|-----------------------|
| | In Mus. | IN MW | IN HRS. | IN MW | IN MW | IN MW | HRS. | IN MW | IN MW |
| 1 | 32 | 33 | 34 | 35 | 36=33+35 | 37=39+40 | 38 | 39 | 40 |
| 01.Aug.15 | 91.104 | 4179 | 00:00 | 0 | 4179 | 4179 | 00:00 | 4179 | 0 |
| 02.Aug.15 | 88.560 | 4422 | 22:56:40 | 0.3 | 4422 | 4422 | 22:56:40 | 4422 | 0.3 |
| 03.Aug.15 | 100.184 | 4944 | 22:36:47 | 0 | 4944 | 4944 | 22:36:47 | 4944 | 0 |
| 04.Aug.15 | 104.073 | 5200 | 15:53:32 | 24 | 5224 | 5224 | 15:53:32 | 5200 | 24 |
| 05.Aug.15 | 105.372 | 5091 | 15:14:40 | 5 | 5096 | 5096 | 15:14:40 | 5091 | 5 |
| 06.Aug.15 | 103.168 | 4884 | 15:49:42 | 0 | 4884 | 4884 | 15:49:42 | 4884 | 0 |
| 07.Aug.15 | 103.206 | 4986 | 14:38:32 | 6 | 4992 | 4992 | 14:38:32 | 4986 | 6 |
| 08.Aug.15 | 94.736 | 4379 | 00:00 | 0 | 4379 | 4379 | 00:00 | 4379 | 0 |
| 09.Aug.15 | 83.989 | 4254 | '00:01:11 | 0 | 4254 | 4254 | '00:01:11 | 4254 | 0 |
| 10.Aug.15 | 95.583 | 4806 | 22:29:54 | 0 | 4806 | 22:29:54 | 15:30 | 4806 | 0 |
| 11.Aug.15 | 98.247 | 4681 | 11:46:01 | 0 | 4681 | 4681 | 11:46:01 | 4681 | 0 |
| 12.Aug.15 | 97.870 | 4765 | 16:05:26 | 179 | 4944 | 4944 | 16:05:26 | 4765 | 179 |
| 13.Aug.15 | 94.846 | 5009 | 23:00 | 0 | 5009 | 5009 | 23:00 | 5009 | 0 |
| 14.Aug.15 | 103.536 | 4862 | 15:00 | 0 | 4862 | 4862 | 15:00 | 4862 | 0 |
| 15.Aug.15 | 84.831 | 4674 | 00:00 | 0 | 4674 | 4674 | 00:00 | 4674 | 0 |
| 16.Aug.15 | 83.932 | 4267 | 22:59:50 | 6 | 4273 | 4273 | 22:59:50 | 4267 | 6 |
| 17.Aug.15 | 98.419 | 4817 | 15:26:33 | 1 | 4818 | 4818 | 15:26:33 | 4817 | 1 |
| 18.Aug.15 | 100.632 | 4908 | 16:02:29 | 0 | 4908 | 4908 | 16:02:29 | 4908 | 0 |
| 19.Aug.15 | 100.965 | 4903 | 15:51 | 0 | 4903 | 4911 | 15:30:00 | 4867 | 44 |
| 20.Aug.15 | 100.727 | 4914 | 16:16:21 | 12 | 4926 | 4926 | 16:16:21 | 4914 | 12 |
| 21.Aug.15 | 103.803 | 4978 | 16:00:24 | 1 | 4979 | 4979 | 16:00:24 | 4978 | 1 |
| 22.Aug.15 | 98.369 | 4639 | 23:25:09 | 0 | 4639 | 4639 | 23:25:09 | 4639 | 0 |
| 23.Aug.15 | 92.422 | 4557 | 00:00:42 | 0 | 4557 | 4557 | 00:00:42 | 4557 | 0 |
| 24.Aug.15 | 101.311 | 4982 | 22:58:27 | 0 | 4982 | 4982 | 22:58:27 | 4982 | 0 |
| 25.Aug.15 | 105.255 | 5229 | 22:56:58 | 4 | 5233 | 5233 | 22:56:58 | 5229 | 4 |
| 26.Aug.15 | 107.341 | 5274 | 22:50:55 | 9 | 5283 | 5283 | 22:50:55 | 5274 | 9 |
| 27.Aug.15 | 111.935 | 5434 | 22:54:38 | 4 | 5438 | 5438 | 22:54:38 | 5434 | 4 |
| 28.Aug.15 | 112.083 | 5389 | 15:54:39 | 0 | 5389 | 5389 | 15:54:39 | 5389 | 0 |
| 29.Aug.15 | 100.272 | 5132 | 00:00:08 | 3 | 5135 | 5135 | 00:00:08 | 5132 | 3 |
| 30.Aug.15 | 101.347 | 5094 | 22:43:08 | 125 | 5219 | 5219 | 22:43:08 | 5094 | 125 |
| 31.Aug.15 | 109.892 | 5297 | 22:56:30 | 2 | 5299 | 5299 | 22:56:30 | 5297 | 2 |
| TOTAL | 3078.010 | 5434 | 22:54:38 | 4 | 5438 | 5438 | 22:54:38 | 5434 | 4 |
| | | 27.08.15 | | | 27.08.15 | | | | |

LOAD PATTERN OF DELHI ON THE DAY OF PEAK DEMAND MET DURING AUGUST 2015 ON 27.08.2015- 5434MW AT 22.54.38HRS.

All figures in MW

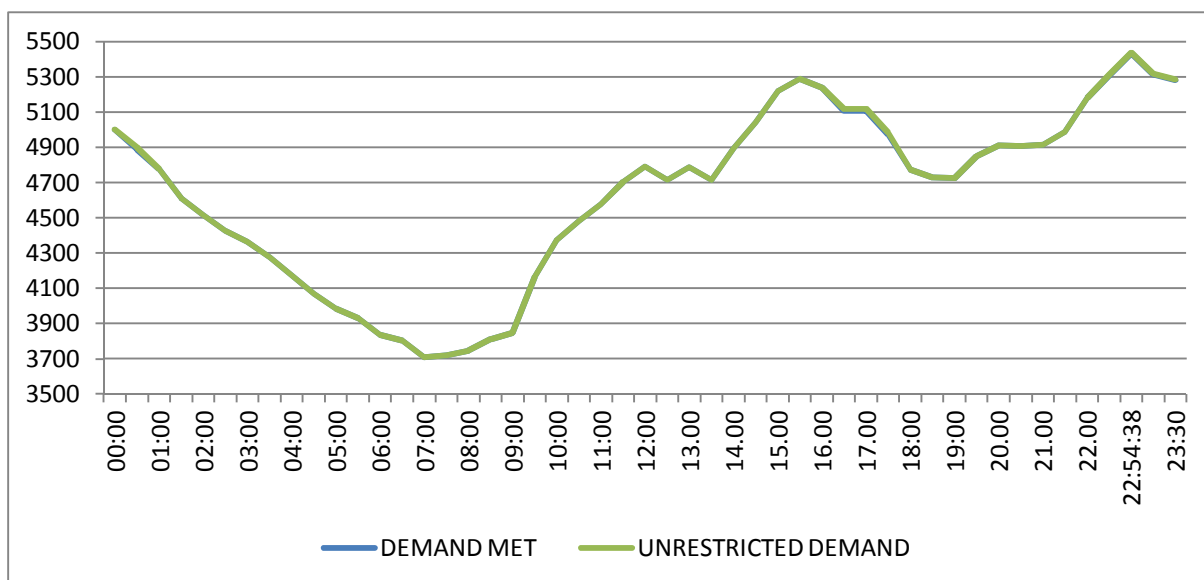
| Hrs. | Demand | Load Shedding | Un-Restricted Demand |
|--------------|--------|---------------|----------------------|
| 00:00 | 4998 | 0 | 4998 |
| 01:00 | 4778 | 0 | 4778 |
| 02:00 | 4516 | 0.1 | 4516 |
| 03:00 | 4362 | 0.1 | 4362 |
| 04:00 | 4173 | 0.1 | 4173 |
| 05:00 | 3984 | 0 | 3984 |
| 06:00 | 3834 | 0 | 3834 |
| 07:00 | 3710 | 0 | 3710 |
| 08:00 | 3744 | 0 | 3744 |
| 09:00 | 3848 | 0 | 3848 |
| 10:00 | 4375 | 0 | 4375 |
| 11:00 | 4577 | 0 | 4577 |
| 12:00 | 4792 | 0 | 4792 |
| 13:00 | 4789 | 0 | 4789 |
| 14:00 | 4897 | 0 | 4897 |
| 15:00 | 5221 | 0 | 5221 |
| 16:00 | 5238 | 0 | 5238 |
| 17:00 | 5109 | 10 | 5119 |
| 18:00 | 4771 | 0 | 4771 |
| 19:00 | 4726 | 0 | 4726 |
| 20:00 | 4912 | 0 | 4912 |
| 21:00 | 4914 | 0 | 4914 |
| 22:00 | 5179 | 0 | 5179 |
| 22:54:38 | 5434 | 4 | 5438 |
| 23:00 | 5313 | 4 | 5317 |
| TOTAL | | | |



11 LOAD PATTERN OF DELHI ON THE DAY OF MAXIMUM UN-RESTRICTED DEMAND DURING AUGUST 2015 ON 27.08.2015- 5434MW AT 22.54.38HRS.

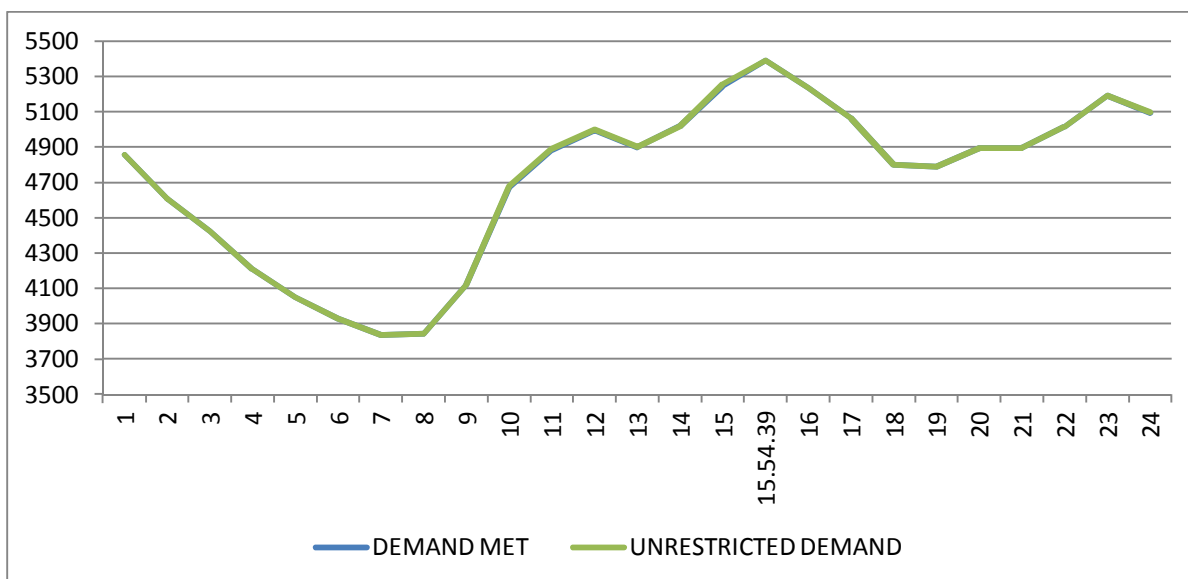
All figures in MW

| Hrs. | Demand | Load Shedding | Un-Restricted Demand |
|-----------------------|--------|---------------|----------------------|
| 00:00 | 4998 | 0 | 4998 |
| 01:00 | 4778 | 0 | 4778 |
| 02:00 | 4516 | 0.1 | 4516 |
| 03:00 | 4362 | 0.1 | 4362 |
| 04:00 | 4173 | 0.1 | 4173 |
| 05:00 | 3984 | 0 | 3984 |
| 06:00 | 3834 | 0 | 3834 |
| 07:00 | 3710 | 0 | 3710 |
| 08:00 | 3744 | 0 | 3744 |
| 09:00 | 3848 | 0 | 3848 |
| 10:00 | 4375 | 0 | 4375 |
| 11:00 | 4577 | 0 | 4577 |
| 12:00 | 4792 | 0 | 4792 |
| 13:00 | 4789 | 0 | 4789 |
| 14:00 | 4897 | 0 | 4897 |
| 15:00 | 5221 | 0 | 5221 |
| 16:00 | 5238 | 0 | 5238 |
| 17:00 | 5109 | 10 | 5119 |
| 18:00 | 4771 | 0 | 4771 |
| 19:00 | 4726 | 0 | 4726 |
| 20:00 | 4912 | 0 | 4912 |
| 21:00 | 4914 | 0 | 4914 |
| 22:00 | 5179 | 0 | 5179 |
| 22:54:38 | 5434 | 4 | 5438 |
| 23:00 | 5313 | 4 | 5317 |
| Total (IN MUS) | | | |



12 LOAD PATTERN OF DELHI ON THE DAY OF MAXIMUM ENERGY CONSUMED DURING AUGUST 2015 – 28.08.2015 – 112.083Mus All figures in MW

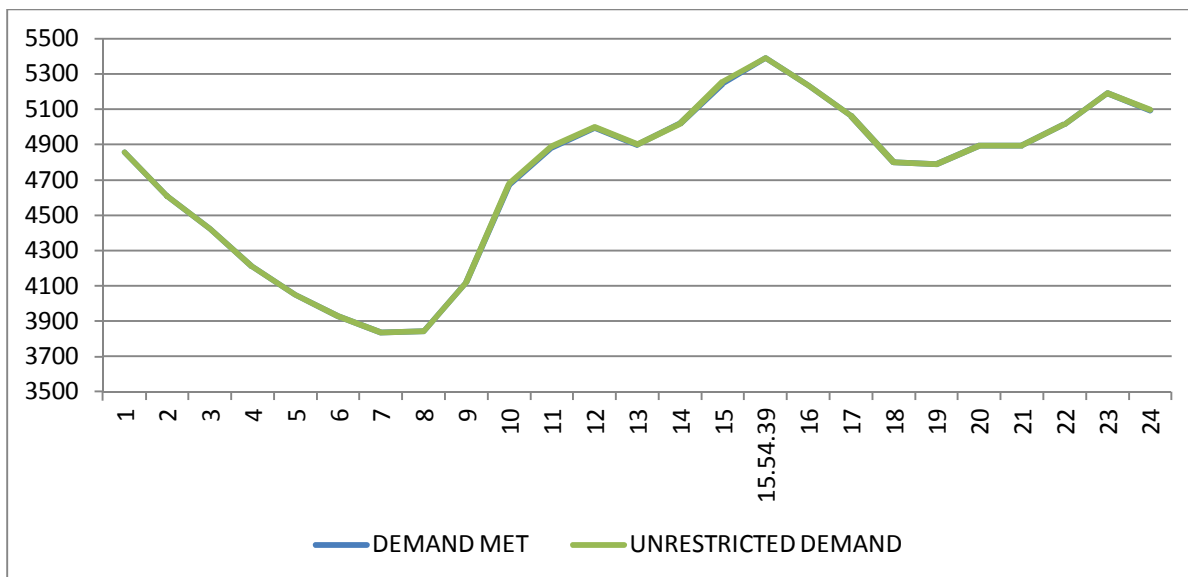
| Hrs. | Demand | Load Shedding | Un-Restricted Demand |
|-----------------------|----------------|---------------|----------------------|
| 1 | 4855 | 2 | 4857 |
| 2 | 4608 | 1 | 4609 |
| 3 | 4425 | 1 | 4425 |
| 4 | 4209 | 1 | 4210 |
| 5 | 4051 | 0 | 4051 |
| 6 | 3926 | 0 | 3926 |
| 7 | 3838 | 0 | 3838 |
| 8 | 3844 | 0 | 3844 |
| 9 | 4119 | 0 | 4119 |
| 10 | 4671 | 5 | 4676 |
| 11 | 4883 | 6 | 4889 |
| 12 | 4996 | 2 | 4998 |
| 13 | 4899 | 4 | 4903 |
| 14 | 4019 | 0 | 4019 |
| 15 | 5245 | 11 | 5256 |
| 15.54.39 | 5389 | 0 | 5389 |
| 16 | 5234 | 0 | 5234 |
| 17 | 5063 | 0 | 5063 |
| 18 | 4801 | 0 | 4801 |
| 19 | 4788 | 0 | 4788 |
| 20 | 4893 | 0 | 4893 |
| 21 | 4893 | 0 | 4893 |
| 22 | 5013 | 0 | 5013 |
| 23 | 5190 | 3 | 5193 |
| 24 | 5095 | 3 | 5098 |
| Total (IN MUS) | 112.083 | 0.035 | 112.118 |



13 LOAD PATTERN OF DELHI ON THE DAY OF MAXIMUM UNRESTRICTED ENERGY DEMAND DURING AUGUST 2015 – 28.08.2015 – 112.118 Mus

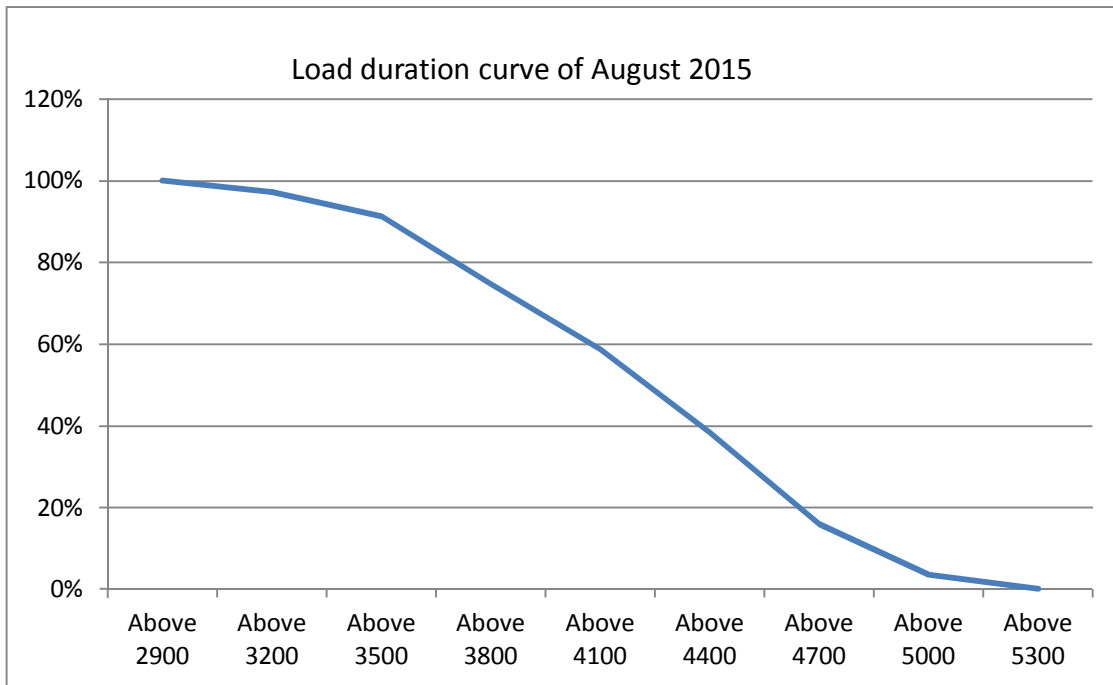
All figures in MW

| Hrs. | Demand | Load Shedding | Un-Restricted Demand |
|-----------------------|----------------|---------------|----------------------|
| 1 | 4855 | 2 | 4857 |
| 2 | 4608 | 1 | 4609 |
| 3 | 4425 | 1 | 4425 |
| 4 | 4209 | 1 | 4210 |
| 5 | 4051 | 0 | 4051 |
| 6 | 3926 | 0 | 3926 |
| 7 | 3838 | 0 | 3838 |
| 8 | 3844 | 0 | 3844 |
| 9 | 4119 | 0 | 4119 |
| 10 | 4671 | 5 | 4676 |
| 11 | 4883 | 6 | 4889 |
| 12 | 4996 | 2 | 4998 |
| 13 | 4899 | 4 | 4903 |
| 14 | 4019 | 0 | 4019 |
| 15 | 5245 | 11 | 5256 |
| 15.54.39 | 5389 | 0 | 5389 |
| 16 | 5234 | 0 | 5234 |
| 17 | 5063 | 0 | 5063 |
| 18 | 4801 | 0 | 4801 |
| 19 | 4788 | 0 | 4788 |
| 20 | 4893 | 0 | 4893 |
| 21 | 4893 | 0 | 4893 |
| 22 | 5013 | 0 | 5013 |
| 23 | 5190 | 3 | 5193 |
| 24 | 5095 | 3 | 5098 |
| Total (IN MUS) | 112.083 | 0.035 | 112.118 |



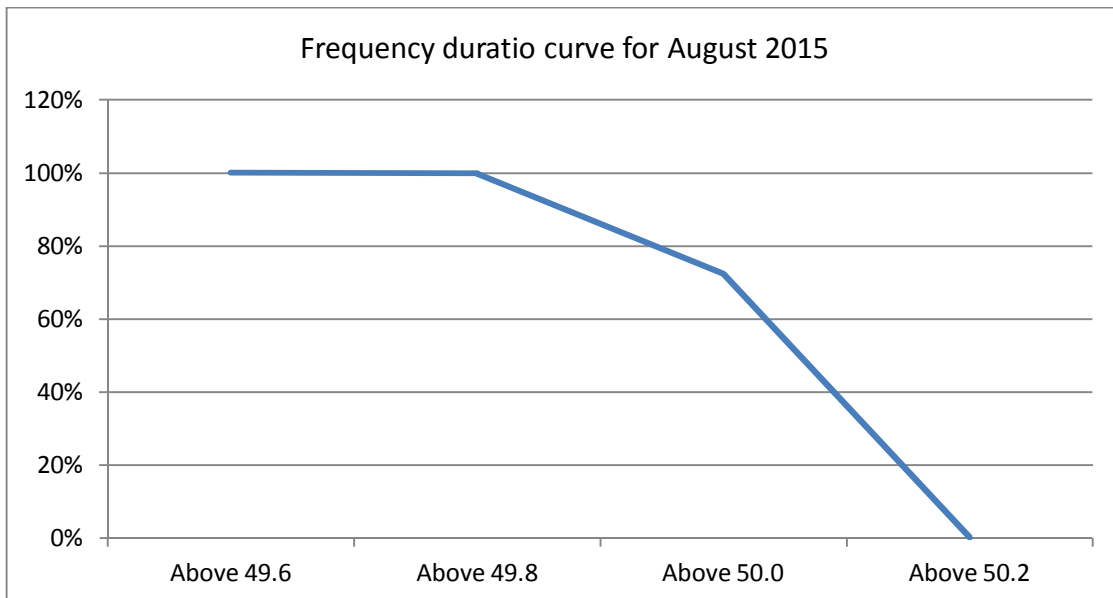
14 **LOAD DURATION CURVE FOR AUGUST 2015**

| Load in MW | Percentage of Time |
|-------------------|---------------------------|
| Above 2900 | 100% |
| Above 3200 | 97.31% |
| Above 3500 | 91.39% |
| Above 3800 | 74.79% |
| Above 4100 | 58.83% |
| Above 4400 | 38.40% |
| Above 4700 | 15.99% |
| Above 5000 | 3.62% |
| Above 5300 | 0.13% |



FREQUENCY ANALYSIS FOR THE MONTH OF AUGUST 2015

| Frequency Range in Hz. | Percentage of time |
|-------------------------------|---------------------------|
| Above 49.6 | 100% |
| Above 49.8 | 99.80% |
| Above 50.0 | 72.41% |
| Above 50.2 | 0.27% |



16 VOLTAGE PROFILE OF 220 KV SUB-STATIONS IN DELHI DURING AUGUST 2015

All figures in kV

| Date | NARELA | | GAZIPUR | |
|-----------|--------|--------|---------|--------|
| | Max | Min | Max | Min |
| 01.Aug.15 | 227.37 | 207.89 | 224.79 | 211.38 |
| 02.Aug.15 | 226.98 | 219.24 | 226.08 | 215.24 |
| 03.Aug.15 | 226.72 | 212.54 | 226.08 | 210.47 |
| 04.Aug.15 | 222.98 | 209.96 | 220.53 | 209.31 |
| 05.Aug.15 | 222.85 | 212.67 | 221.56 | 208.15 |
| 06.Aug.15 | 222.85 | 211.76 | 221.05 | 210.21 |
| 07.Aug.15 | 223.50 | 212.79 | 222.85 | 209.18 |
| 08.Aug.15 | 223.76 | 214.08 | 221.56 | 210.86 |
| 09.Aug.15 | 226.08 | 216.28 | 226.59 | 213.95 |
| 10.Aug.15 | 225.69 | 213.70 | 224.01 | 208.80 |
| 11.Aug.15 | 224.92 | 214.34 | 225.05 | 212.54 |
| 12.Aug.15 | 226.08 | 212.02 | 227.50 | 212.79 |
| 13.Aug.15 | 223.11 | 211.50 | 226.08 | -- |
| 14.Aug.15 | 225.43 | 216.41 | 217.18 | 201.70 |
| 15.Aug.15 | 229.82 | 220.79 | 221.56 | 208.02 |
| 16.Aug.15 | 228.92 | 219.11 | 220.53 | 203.77 |
| 17.Aug.15 | 226.85 | 216.41 | 218.21 | 200.93 |
| 18.Aug.15 | 226.72 | 215.24 | 216.41 | 202.22 |
| 19.Aug.15 | 228.53 | 212.15 | 216.92 | 189.97 |
| 20.Aug.15 | 224.92 | 212.67 | 216.92 | 191.77 |
| 21.Aug.15 | 225.69 | 213.31 | 222.98 | -- |
| 22.Aug.15 | 225.43 | 216.28 | 223.76 | 207.51 |
| 23.Aug.15 | 225.56 | 218.60 | 225.69 | 203.51 |
| 24.Aug.15 | 225.43 | 214.34 | 216.92 | 194.74 |
| 25.Aug.15 | 224.79 | 212.02 | 209.83 | 187.39 |
| 26.Aug.15 | 223.50 | 210.60 | 207.38 | 189.19 |
| 27.Aug.15 | 223.63 | -- | 210.47 | 188.68 |
| 28.Aug.15 | 223.37 | 212.02 | 208.28 | 190.87 |
| 29.Aug.15 | 226.08 | 217.05 | 213.83 | 194.35 |
| 30.Aug.15 | 226.21 | 218.21 | 214.47 | 193.94 |
| 31.Aug.15 | 223.63 | 212.02 | 210.73 | 190.74 |

17 VOLTAGE PROFILE OF 400 KV SUB-STATIONS IN DELHI DURING AUGUST 2015
All figures in kV

| Date | 400kV Bamnauli Grid Sub-Station | | | | |
|-----------|---------------------------------|----------|--------|----------|------------|
| | Max KV | Max Time | Min KV | Min Time | Average KV |
| 01.Aug.15 | 412.23 | 06.02.48 | 393.70 | 11.42 | 402.44 |
| 02.Aug.15 | 411.99 | 06.03.42 | 397.22 | 19.51 | 405.02 |
| 03.Aug.15 | 412.70 | 06.01.17 | 390.19 | 14.52 | 400.67 |
| 04.Aug.15 | 407.54 | 05.54.26 | 387.37 | 14.47 | 396.47 |
| 05.Aug.15 | 407.30 | 06.02.43 | 389.72 | 12.19 | 398.19 |
| 06.Aug.15 | 406.83 | 06.02.17 | 390.19 | 14.50 | 398.78 |
| 07.Aug.15 | 407.77 | 05.03.22 | 390.42 | 14.53 | 400.22 |
| 08.Aug.15 | 408.94 | 05.31.15 | 391.12 | 19.42 | 401.14 |
| 09.Aug.15 | 413.17 | 08.51.10 | 394.64 | 21.11 | 405.43 |
| 10.Aug.15 | 411.52 | 06.02.53 | 390.89 | 11.51 | 401.28 |
| 11.Aug.15 | 410.35 | 04.03.36 | 393.70 | 10.57 | 403.26 |
| 12.Aug.15 | 413.40 | 04.03.00 | 391.12 | 19.44 | 402.95 |
| 13.Aug.15 | 408.94 | 04.05.04 | 389.01 | 19.51 | 399.66 |
| 14.Aug.15 | 409.18 | 05.04.28 | 389.01 | 19.51 | 399.66 |
| 15.Aug.15 | 414.81 | 13.03.44 | 397.92 | 00.07 | 408.14 |
| 16.Aug.15 | 413.63 | 06.01.26 | 395.58 | 19.46 | 405.95 |
| 17.Aug.15 | 411.06 | 04.08.49 | 392.06 | 14.20 | 401.30 |
| 18.Aug.15 | 411.06 | 04.02.33 | 389.72 | 14.43 | 401.89 |
| 19.Aug.15 | 415.04 | 05.05.57 | 389.25 | 14.54 | 401.06 |
| 20.Aug.15 | 409.65 | 03.46.01 | 383.08 | 19.38 | 399.02 |
| 21.Aug.15 | 409.88 | 06.01.22 | 387.61 | 14.27 | 398.73 |
| 22.Aug.15 | 411.06 | 06.02.22 | 389.25 | 19.36 | 399.81 |
| 23.Aug.15 | 408.48 | 04.35.05 | 398.16 | 00.32 | 406.21 |
| 24.Aug.15 | 411.29 | 06.02.17 | 388.78 | 22.12 | 399.97 |
| 25.Aug.15 | 407.77 | 06.02 | 376.12 | 10.52 | 395.18 |
| 26.Aug.15 | 403.08 | 05.17 | 380.34 | 14.32 | 392.15 |
| 27.Aug.15 | 403.79 | 06.01 | 377.05 | 14.56 | 392.58 |
| 28.Aug.15 | 402.14 | 06.02 | 380.81 | 11.14 | 392.78 |
| 29.Aug.15 | 407.77 | 18.03 | 388.54 | 23.16 | 398.06 |
| 30.Aug.15 | 407.30 | 18.01 | 386.20 | 22.22 | 396.74 |
| 31.Aug.15 | 405.19 | 06.01 | 382.21 | 14.38 | 391.90 |

| Date | 400kV Bawana Grid Sub-Station | | | | |
|-----------|-------------------------------|----------|--------|----------|------------|
| | Max KV | Max Time | Min KV | Min Time | Average KV |
| 01.Aug.15 | 419.50 | 06.02.53 | 402.61 | 11.42 | 410.14 |
| 02.Aug.15 | 419.03 | 16.33.30 | 406.13 | 19.51 | 412.34 |
| 03.Aug.15 | 419.50 | 06.01.11 | 243.40 | 06.43 | 408.73 |
| 04.Aug.15 | 413.87 | 05.53.41 | 396.99 | 19.21 | 405.35 |
| 05.Aug.15 | 415.04 | 05.30.00 | 398.39 | 12.19 | 406.62 |
| 06.Aug.15 | 413.63 | 06.01.54 | 397.92 | 14.47 | 406.43 |
| 07.Aug.15 | 415.04 | 05.17.11 | 400.27 | 14.47 | 407.99 |
| 08.Aug.15 | 415.98 | 05.31.25 | 399.57 | 19.40 | 409.00 |
| 09.Aug.15 | 421.61 | 16.04.50 | 407.77 | 00.05 | 416.12 |
| 10.Aug.15 | 420.20 | 00.08.48 | 234.72 | 16.06 | 415.73 |
| 11.Aug.15 | 417.86 | 04.02.37 | 401.91 | 10.55 | 410.72 |
| 12.Aug.15 | 419.73 | 04.23.08 | 399.57 | 19.44 | 410.40 |
| 13.Aug.15 | 415.04 | 05.18.19 | 397.45 | 19.33 | 407.13 |
| 14.Aug.15 | 416.21 | 05.04.12 | 398.16 | 19.49 | 407.66 |
| 15.Aug.15 | 421.37 | 17.05.05 | 406.37 | 00.07 | 414.84 |
| 16.Aug.15 | 420.20 | 06.00.43 | 244.80 | 03.43 | 412.72 |
| 17.Aug.15 | 416.92 | 04.01.25 | 399.57 | 14.20 | 408.65 |
| 18.Aug.15 | 416.92 | 04.04.08 | 397.22 | 14.20 | 409.05 |
| 19.Aug.15 | 422.55 | 05.05.57 | 398.39 | 14.54 | 409.18 |
| 20.Aug.15 | 415.74 | 05.04.40 | 394.41 | 14.42 | 405.56 |
| 21.Aug.15 | 416.92 | 06.01.16 | 395.81 | 14.28 | 406.61 |
| 22.Aug.15 | 416.21 | 06.04.16 | 398.39 | 19.42 | 407.59 |
| 23.Aug.15 | 419.26 | 06.01.27 | 406.37 | 00.32 | 412.32 |
| 24.Aug.15 | 417.86 | 06.01.58 | 399.10 | 22.10 | 408.24 |
| 25.Aug.15 | 414.57 | 05.23 | 393.70 | 14.33 | 404.37 |
| 26.Aug.15 | 412.23 | 05.17 | 235.42 | 11.25 | 401.80 |
| 27.Aug.15 | 411.29 | 06.03 | 389.72 | 14.57 | 402.06 |
| 28.Aug.15 | 410.82 | 04.01 | 390.42 | 14.51 | 402.54 |
| 29.Aug.15 | 415.04 | 18.02 | 399.57 | 23.09 | 406.72 |
| 30.Aug.15 | 415.74 | 18.01 | 397.92 | 22.08 | 405.87 |
| 31.Aug.15 | 410.82 | 08.01 | 392.30 | 12.36 | 399.75 |

18 DETAILS OF LUMPED CAPACITORS AT NEAREST 220 KV SUBSTATION

| Sl. No | SUB-STATION | INSTALLED CAPACITY | | | |
|----------|-------------------------|--------------------|--------------|--------------|----------------|
| | | 66KV | 33kV | 11kV | TOTAL |
| 1 | IP YARD | | 30 | | 30 |
| 1 | Kamla Market | | | 16.35 | 16.35 |
| 2 | Minto Road | | | | 0 |
| 3 | GB Pant Hosp | | | 15.88 | 15.88 |
| 4 | Delhi Gate | | | 10.9 | 10.9 |
| 5 | Tilakmarg | | | 5.04 | 5.04 |
| 7 | Cannaught Place | | | 10.08 | 10.08 |
| 8 | Kilokri | | 10.08 | 10.48 | 20.56 |
| 9 | NDSE | | | | 0 |
| 11 | Nizamuddin | | | | 0 |
| 12 | Exhibition-I | | | | 0 |
| 13 | Exhibition-II | | | | 0 |
| 14 | Defence Colony | | | | 0 |
| 15 | IG Stadium | | 10.08 | 5.45 | 15.53 |
| 16 | Lajpat Nagar | | | | 0 |
| 17 | IP Estate | | | 10.9 | 10.9 |
| | LT BYPL | | | | 5.6 |
| | | 0 | 50.16 | 85.08 | 140.84 |
| 2 | Electric Lane | | | | |
| 1 | Electric Lane | | | 5.04 | 5.04 |
| 2 | Scindia House | | | 5.04 | 5.04 |
| 3 | Raisina Road | | | 10.08 | 10.08 |
| 4 | Raja Bazar | | | 10.08 | 10.08 |
| | LT NDMC | | | | 12 |
| | | 0 | 0 | 30.24 | 42.24 |
| 3 | RPH Station | | 20 | | 20 |
| 1 | Lahori Gate | | | 10.49 | 10.49 |
| 2 | Jama Masjid | | | 10.48 | 10.48 |
| 4 | Kamla Market | | | | 0 |
| 5 | Minto Road | | | 10.9 | 10.9 |
| 6 | GB Pant Hosp | | | | 0 |
| 7 | IG Stadium | | | | 0 |
| | LT BYPL | | | | 3 |
| | | 0 | 20 | 31.87 | 54.87 |
| 4 | Parkstreet S/stn | 20 | 20 | | 40 |
| 1 | Shastri Park | | 10.896 | 5.45 | 16.346 |
| 2 | Faiz Road | | | 18.05 | 18.05 |
| 3 | Motia Khan | | | 16.3 | 16.3 |
| 4 | Prasad Nagar | | | 16.25 | 16.25 |
| 5 | Anand Parbat | | | 10.8 | 10.8 |
| 6 | Shankar Road | | | 5.04 | 5.04 |
| 7 | Rama Road | | | 0 | 0 |
| 8 | Baird Road | | | 10.08 | 10.08 |
| 9 | Hanuman Road | | | 5.04 | 5.04 |
| 10 | Pusa | | | 5.44 | 5.44 |
| 11 | Ridge Valley | | | 0 | 0 |
| 12 | B. D. Marg | | | 0 | 0 |
| 13 | Nirman Bhawan | | | 5.04 | 5.04 |
| | LT BYPL | | | 0 | 30.1 |
| | | 20.00 | 30.90 | 97.49 | 178.486 |
| 5 | Naraina S/stn | | 20 | 5.04 | 25.04 |
| 1 | DMS | | | 10.85 | 10.85 |
| 2 | Mayapuri | | 10.87 | 10.4 | 21.27 |
| 3 | Inderpuri | | 10 | 4.8 | 14.8 |
| 4 | Rewari line | | | | 0 |
| 5 | Khyber Lane | | 10.05 | | 10.05 |
| 6 | Kirbi Place | | 10.05 | | 10.05 |
| 7 | Payal | | | 7.2 | 7.2 |
| 8 | Saraswati Garden | | | 10.88 | 10.88 |
| | | 0 | 60.97 | 49.17 | 110.14 |

| Sl. No | SUB-STATION | INSTALLED CAPACITY | | | |
|-----------|---------------------------|--------------------|--------------|---------------|---------------|
| | | 66KV | 33kV | 11kV | TOTAL |
| 6 | Mehrauli S/stn | 80 | | 5.04 | 85.04 |
| 1 | Adchini | | | 14.61 | 14.61 |
| 2 | Andheria Bagh | | | 10.85 | 10.85 |
| 3 | IIT | | | 10.9 | 10.9 |
| 4 | JNU | | 10.03 | 10.03 | 20.06 |
| 5 | Bijwasan | | | 15.47 | 15.47 |
| 6 | DC Saket | | | 9.98 | 9.98 |
| 7 | Malviya Nagar | | | | 0 |
| 8 | C Dot | | | 10.48 | 10.48 |
| 9 | Vasant kunj B-Blk | 21.79 | | 10.9 | 32.69 |
| 10 | Vasant kunj C-Blk | 20.16 | | 10.48 | 30.64 |
| 11 | Palam | | | | 0 |
| 12 | IGNOU | | | 5.04 | 5.04 |
| 13 | R. K. Puram-I | | | 10.07 | 10.07 |
| 14 | Vasant Vihar | | | 19.25 | 19.25 |
| 15 | Pusp Vihar | | | 10.44 | 10.44 |
| 16 | Bhikaji Cama Place | | 10.08 | 10.07 | 20.15 |
| | LT BRPL | | | | 25 |
| | | 121.95 | 20.11 | 163.61 | 330.67 |
| 7 | Vasantkunj S/stn | 40 | | 5.04 | 45.04 |
| 1 | R. K. Puram-II | | | 10.08 | 10.08 |
| 2 | Vasant kunj C-Blk | | | | 0 |
| 3 | Vasant kunj D-Blk | | | 9.63 | 9.63 |
| 4 | Ridge Valley | | | | 0 |
| | LT BRPL | | | | 33.2 |
| | | 40 | 0 | 24.75 | 97.95 |
| 8 | Okhla S/stn | 60 | 10 | 5.04 | 75.04 |
| 1 | Balaji | | | 10.8 | 10.8 |
| 2 | East of Kailash | | | 15.89 | 15.89 |
| 3 | Alaknanda | | | 16.3 | 16.3 |
| 4 | Malviya Nagar | 21.79 | | 10.85 | 32.64 |
| 5 | Masjid Moth | | | 16.3 | 16.3 |
| 6 | Nehru Place | | | 21.34 | 21.34 |
| 7 | Okhla Ph-I | 21.79 | | 16.3 | 38.09 |
| 8 | Okhla Ph-II | | 20.93 | 15.47 | 36.4 |
| 9 | Shivalik | | | 10.8 | 10.8 |
| 10 | Batra | | | 15.9 | 15.9 |
| 11 | VSNL | | | 10.9 | 10.9 |
| 12 | Siri Fort | | | 10.49 | 10.49 |
| 13 | Tuglakabad | | | 10.85 | 10.85 |
| | LT BRPL | | | | 59 |
| | | 103.58 | 30.93 | 187.23 | 380.74 |
| 9 | Lodhi Road S/stn | | 20 | | 20 |
| 1 | Defence Colony | | 14.85 | | 14.85 |
| 2 | Hudco | | 10.9 | | 10.9 |
| 3 | Lajpat Nagar | | 10.9 | | 10.9 |
| 4 | Nizamuddin | | 10.44 | | 10.44 |
| 5 | Vidyut Bhawan | | | | 0 |
| 6 | Ex. Gr. II | | | | 0 |
| 7 | IHC | | | | 0 |
| | LT BRPL | | | | 42 |
| | | 0 | 67.09 | 0 | 109.09 |
| 10 | Sarita Vihar S/stn | 20 | | 5.04 | 25.04 |
| 1 | Sarita Vihar | | | 10.07 | 10.07 |
| 2 | MCIE | | | 10.06 | 10.06 |
| 3 | Mathura Road | 20.16 | | 11.69 | 31.85 |
| 4 | Jamia Millia | | | 10.89 | 10.89 |
| 5 | Sarai Julena | | 10.08 | 16.29 | 26.37 |
| 6 | Jasola | | | 5.44 | 5.44 |
| | LT BRPL | | | | 23.6 |
| | | 40.16 | 10.08 | 69.48 | 143.32 |

| Sl. No | SUB-STATION | INSTALLED CAPACITY | | | |
|-----------|-------------------------|--------------------|--------------|---------------|---------------|
| | | 66KV | 33kV | 11kV | TOTAL |
| 11 | Wazirabad | | | | |
| 1 | Bhagirathi | | 14.4 | 10.9 | 25.3 |
| 2 | Ghonda | 21.79 | 22.56 | 15.94 | 60.29 |
| 3 | Seelam Pur | | 10.08 | 21.39 | 31.47 |
| 4 | Dwarkapuri | | | 15.46 | 15.46 |
| 5 | Nandnagri | 20.16 | | 16.35 | 36.51 |
| 6 | Yamuna Vihar | | | 16.2 | 16.2 |
| 7 | East of Loni Road | | | 10.8 | 10.8 |
| 8 | Shastri Park | | | 10.9 | 10.9 |
| 9 | Karawal Nagar | | | 5.4 | 5.4 |
| 10 | Sonia Vihar | | | 7.2 | 7.2 |
| | LT BYPL | | | | 10 |
| | | 41.95 | 47.04 | 130.54 | 229.53 |
| 12 | Geeta Colony | | | | |
| 1 | Geeta Colony | | | | 0 |
| 2 | Kanti Nagar | | | 10.49 | 10.49 |
| 3 | Kailash Nagar | | | 10.9 | 10.9 |
| 4 | Seelam Pur | | | 15.48 | 15.48 |
| 5 | Shakar Pur | | | | 0 |
| | LT BYPL | | | | 5.8 |
| | | 0 | 0 | 36.87 | 42.67 |
| 13 | Gazipur S/stn | 40 | | 5.04 | 45.04 |
| 1 | Dallupura | 28.8 | | 10.9 | 39.7 |
| 2 | Vivek Vihar | | | 9.57 | 9.57 |
| 3 | GT Road | | | 10.85 | 10.85 |
| 4 | Kondli | 20.16 | | 10.85 | 31.01 |
| 5 | MVR-I | | | 10.9 | 10.9 |
| 6 | MVR-II | 20.16 | | 10.9 | 31.06 |
| 7 | PPG Ind. Area | | | 10.06 | 10.06 |
| | LT BYPL | | | | 20.6 |
| | | 109.12 | 0 | 79.07 | 208.79 |
| 14 | Patparganj S/stn | 40 | 20 | 5.04 | 65.04 |
| 1 | GH-I | 19.89 | | 10.45 | 30.34 |
| 2 | GH-II | 20.09 | | 10.9 | 30.99 |
| 3 | CBD | | 10.03 | 15.48 | 25.51 |
| 4 | Guru Angad Nagar | | | 15.49 | 15.49 |
| 5 | Karkadooma | | 10.8 | 10.44 | 21.24 |
| 6 | Preet Vihar | | | 10.07 | 10.07 |
| 7 | CBD-II | | | 10.8 | 10.8 |
| 8 | Shakarpur | | | 10.8 | 10.8 |
| 9 | Jhilmil | | | 10.8 | 10.8 |
| 10 | Dilshad Garden | 20.16 | | 16.35 | 36.51 |
| 11 | Khichipur | 21.79 | | 10.49 | 32.28 |
| 12 | Mother Dairy | | | | 0 |
| 13 | Scope Building | | | | 0 |
| 14 | Vivek Vihar | | | | 0 |
| 15 | Akhardham | | | 14.6 | 14.6 |
| | LT BYPL | | | | 23.3 |
| | | 121.93 | 40.83 | 151.71 | 337.77 |
| 15 | Najafgarh S/stn | 60 | | 5.04 | 65.04 |
| 1 | A4 Paschim Vihar | | | 10.8 | 10.8 |
| 2 | Nangloi | 21.73 | | 15.84 | 37.57 |
| 3 | Nangloi WW | 20.89 | | 10.85 | 31.74 |
| 4 | Pankha Road | | | 15.88 | 15.88 |
| 5 | Jaffarpur | | | 15.43 | 15.43 |
| 7 | Inst. Area Janakpuri | | | 17.6 | 17.6 |
| 8 | Paschimpuri | | 10.05 | 15.47 | 25.52 |
| 9 | Paschim Vihar | 41.83 | | 15.43 | 57.26 |
| 10 | Mukherjee Park | | | 20.83 | 20.83 |
| 11 | Udyog Nagar | | | 10.43 | 10.43 |
| 12 | Choukhandi | | | 10.07 | 10.07 |
| | LT BRPL | | | | 27 |
| | | 144.45 | 10.05 | 163.67 | 345.17 |

| Sl. No | SUB-STATION | INSTALLED CAPACITY | | | |
|-----------|----------------------------|--------------------|-----------|--------------|---------------|
| | | 66KV | 33kV | 11kV | TOTAL |
| 16 | Pappankalan-I S/stn | 20 | | 5.04 | 25.04 |
| 1 | Bindapur Grid G-3 PPK | 21.73 | | 15.85 | 37.58 |
| 2 | Bodella-I | 20.1 | | 16.24 | 36.34 |
| 3 | Bodella-II | 21.73 | | 17.64 | 39.37 |
| 4 | DC Janakpuri | | | 10.03 | 10.03 |
| 5 | G-2 PPK | | | 10.8 | 10.8 |
| 6 | G-5 PPK | | | 15.51 | 15.51 |
| 7 | G-6 PPK | | | 5.4 | 5.4 |
| 8 | G-15 PPK | | | 10.8 | 10.8 |
| 9 | Harinagar | 21.18 | | 16.25 | 37.43 |
| 10 | Rewari line | | | 5.44 | 5.44 |
| | LT BRPL | | | | 13.5 |
| | | 104.74 | 0 | 129 | 247.24 |
| 17 | BBMB Rohtak Road | | | | |
| 1 | S.B. Mill | | | 10.07 | 10.07 |
| 2 | Rama Road | | | 10.88 | 10.88 |
| 3 | Ram Pura | | | 10.48 | 10.48 |
| 4 | Rohtak Road | | | 8.04 | 8.04 |
| 5 | Vishal | | | 10.4 | 10.4 |
| 6 | Tri Nagar | | | 5.44 | 5.44 |
| 7 | Madipur | | | 10.43 | 10.43 |
| 8 | Sudershan Park | | | 10.08 | 10.08 |
| 9 | Kirti Nagar | | | 5.44 | 5.44 |
| | | 0 | 0 | 81.26 | 81.26 |
| 18 | Shalimarbagh S/stn | | 40 | 6 | 46 |
| 1 | S.G.T. Nagar | | | 5.44 | 5.44 |
| 2 | Wazirpur-1 | | | 17.18 | 17.18 |
| 3 | Wazirpur-2 | | | 11.39 | 11.39 |
| 4 | Ashok Vihar | | | 5.44 | 5.44 |
| 5 | Rani Bagh | | | 10.88 | 10.88 |
| 6 | Haiderpur | | | 11.39 | 11.39 |
| 7 | SMB FC | | | 5.44 | 5.44 |
| 8 | SMB KHOSLA | | | 5.44 | 5.44 |
| | LT TPDDL | | | | 30 |
| | | 0 | 40 | 78.6 | 148.6 |
| 19 | Subzimandi S/stn | | | 6 | 6 |
| 1 | Shakti Nagar | | | 5.94 | 5.94 |
| 2 | Gulabibagh | | | 10.88 | 10.88 |
| 3 | Shahzadabagh | | | 13.68 | 13.68 |
| 4 | DU | | | 5.44 | 5.44 |
| 5 | Tripolia | | | 10.88 | 10.88 |
| | B. G. Road | | | 5.4 | 5.4 |
| | LT BYPL | | | | 0.9 |
| | LT TPDDL | | | | 20 |
| | | 0 | 0 | 58.22 | 79.12 |
| 20 | Narela S/stn | 40 | | 5.04 | 45.04 |
| 1 | A-7 Narela | | | 10.88 | 10.88 |
| 2 | AIR Kham pur | | | 6 | 6 |
| 3 | Ashok vihar | | | 10.48 | 10.48 |
| 4 | Azad Pur | | | 5.44 | 5.44 |
| 5 | Tri Nagar | | | 5.44 | 5.44 |
| 6 | Badli | 20 | | 5.95 | 25.95 |
| 7 | DSIDC Narela-1 | | | 5.95 | 5.95 |
| 8 | GTK | | | 5.44 | 5.44 |
| 9 | Jahangirpuri | 20 | 10 | 0 | 30 |
| 10 | Bhalswa | | | 3.6 | 3.6 |
| | LT TPDDL | | | | 10 |
| | | 80 | 10 | 64.22 | 164.22 |

| Sl. No | SUB-STATION | INSTALLED CAPACITY | | | |
|-----------|------------------------------|--------------------|--------------|---------------|---------------|
| | | 66KV | 33kV | 11kV | TOTAL |
| 21 | Gopalpur S/stn | | 30 | 5.04 | 35.04 |
| 1 | Azad Pur | | | 10.88 | 10.88 |
| 2 | Hudson Lane | | | 5.44 | 5.44 |
| 3 | Wazirabad | | | 2.4 | 2.4 |
| 4 | Indra Vihar | | | 5.44 | 5.44 |
| 6 | GTK Road | | | 5.94 | 5.94 |
| 7 | Jahangirpuri | | 10 | 5.95 | 15.95 |
| 8 | Civil lines | | | 5.44 | 5.44 |
| 9 | Pitam Pura-1 | | | 5.44 | 5.44 |
| 10 | Pitam Pura-3 | | | 5.44 | 5.44 |
| 11 | Air Khampur | | | 5.95 | 5.95 |
| 12 | SGT Nagar | | | 5.95 | 5.95 |
| 13 | Tiggipur | | | 10.88 | 10.88 |
| | LT TPDDL | | | | 29 |
| | | 0 | 40 | 80.19 | 149.19 |
| 22 | Rohini S/stn | 40 | | 6 | 46 |
| 1 | Rohini Sec-22 | | | 10.88 | 10.88 |
| 2 | Rohini Sec-23 | 20 | | 5.44 | 25.44 |
| 3 | Rohini Sec-24 | | | 5.44 | 5.44 |
| 4 | Rohini-1 | | | 5.44 | 5.44 |
| 5 | Rohini-3 | | | 5.95 | 5.95 |
| 6 | Rohini-4 | | | 11.39 | 11.39 |
| 7 | Rohini-5 | | | 11.39 | 11.39 |
| 8 | Rohini-6 | | | 5.95 | 5.95 |
| 9 | Mangolpuri-1 | | | 16.83 | 16.83 |
| 10 | Mangolpuri-2 | 20 | | 5.94 | 25.94 |
| 11 | Pitam Pura-1 | 20 | | 5.04 | 25.04 |
| 12 | Pitam Pura-2 | | | 10.48 | 10.48 |
| 13 | Rohini DC-1 | | | 14.4 | 14.4 |
| | LT TPDDL | | | | 30 |
| | | 100 | 0 | 120.57 | 250.57 |
| 23 | Kanjhawa S/stn | 20 | | 5.04 | 25.04 |
| 1 | Bawana Clear Water | | | 10.88 | 10.88 |
| 2 | Pooth Khoord | | | 5.44 | 5.44 |
| | | 20 | 0 | 21.36 | 41.36 |
| 24 | BAWANA S/stn | | | | |
| 1 | Bawana S/stn No. 6 | | | 10.88 | 10.88 |
| 2 | Bawana S/stn No. 7 | | | | 0 |
| | | 0 | 0 | 10.88 | 10.88 |
| 25 | Kashmerigate S/stn | | | 5.04 | 5.04 |
| 1 | Civil lines | | | 5.44 | 5.44 |
| 2 | Town Hall | | | 8.64 | 8.64 |
| 3 | Fountain | | | 5.45 | 5.45 |
| | LT BYPL | | | | 2.7 |
| | | 0 | 0 | 24.57 | 27.27 |
| 26 | Pappankalan-II | | | | |
| 1 | DMRC-I | | | | 0 |
| 2 | DMRC-II | | | | 0 |
| 27 | Trauma Center (AIIMS) | | | | |
| 1 | AIIMS | | 13.26 | 5.04 | 18.3 |
| 2 | Trauma Center | | | 10.08 | 10.08 |
| 3 | Netaji Nagar | | | 15.12 | 15.12 |
| 4 | Sanjay Camp | | | 10.08 | 10.08 |
| 5 | Kidwai Nagar | | | 5.04 | 5.04 |
| 6 | SJ Airport | | | 5.04 | 5.04 |
| | Race Course | | | 5.04 | 5.04 |
| | | 0 | 13.26 | 55.44 | 68.7 |

| Sl. No | SUB-STATION | INSTALLED CAPACITY | | | |
|-----------|--------------------------|--------------------|-------|--------|-------|
| | | 66KV | 33kV | 11kV | TOTAL |
| 28 | MUNDKA | | | | |
| | Rohini-2 | | | 11.39 | 11.39 |
| | LT BRPL | | | | 18.5 |
| | | 0 | 0 | 11.39 | 29.89 |
| 29 | DSIDC BAWANA | | | | |
| | DSIDC NRL-1 | 20 | | | 20 |
| | DSIDC NRL-2 | | | 10.88 | 10.88 |
| | | 20 | 0 | 10.88 | 30.88 |
| 30 | RIDGE VALLEY | | | | |
| | Keventry Diary | | | 10.08 | 10.08 |
| | Nehru Park | | | 5.04 | 5.04 |
| | Bapu Dham | | | 10.08 | 10.08 |
| | | 0 | 0 | 25.2 | 25.2 |
| 31 | IP EXTN (PRAGATI) | | | | |
| | Vidyut Bhawan | | | 10.08 | 10.08 |
| | Dalhousie Road | | | 5.04 | 5.04 |
| | School Lane | | | 5.04 | 5.04 |
| | LT NDMC | | | | 12.29 |
| | | 0 | 0 | 20.16 | 32.45 |
| | TOTAL CAPACITY | 1067.9 | 491.4 | 2092.7 | 4139 |

| Utility | HT | LT | Total |
|--------------|-------------|------------|-------------|
| BYPL | 864 | 102 | 966 |
| TPDDL | 657 | 119 | 776 |
| NDMC | 180 | 24 | 204 |
| DTL | 754 | 0 | 754 |
| BRPL | 1158 | 242 | 1400 |
| RPH | 20 | 0 | 20 |
| MES | 20 | 0 | 20 |
| TOTAL | 3652 | 487 | 4139 |

20 DETAILS OF BREAK-DOWNS DURING THE MONTH OF AUGUST 2015

| SL NO | OCCURRENCE OF BREAK-DOWN | | DETAILS OF THE BREAKDOWN | TIME OF RESTORATION | | REMARKS |
|-------|--------------------------|-------|--------------------------------------|---------------------|-------|--|
| | DATE | TIME | | DATE | TIME | |
| 1 | 01-08-15 | 08:32 | DSIIDC Bawana 220/66kV 100MVA Tx-III | 01-08-15 | 14:00 | 66KV I/C-3 OF TX TRIPPED ON O/,E/F,86. |
| 2 | 01-08-15 | 08:32 | DSIIDC Bawana 220/66kV 100MVA Tx-II | 01-08-15 | 18:52 | TX TRIPPED ON DIFFERENTIAL PROTECTION,86. 66KV I/C-2 TRIPPED ON 86. |
| 3 | 01-08-15 | 15:16 | PEERA GARHI 220/33kV 100MVA Tx-II | 01-08-15 | 16:39 | 33KV I/C-2 TRIPPED ON 86A&B. |
| 4 | 03-08-15 | 13:35 | GAZIPUR 220/66kV 100MVA Tx-I | 03-08-15 | 18:15 | TX TRIPPED ON DIFFERENTIAL AND 66KV I/C-1 TRIPPED WITHOUT INDICATION. R-PH LA DAMAGED. |
| 5 | 03-08-15 | 19:23 | KANJHAWALA 66/11kV, 20MVA Tx-II | 03-08-15 | 19:28 | 11KV I/C-2 OF TX TRIPPED ON E/F. |
| 6 | 03-08-15 | 21:10 | BAMNAULI 400/220kV 500MVA ICT-II | 04-08-15 | 02:55 | ICT MADE AS SPARKING OCCURRED AT Y-PH BUSHING OF 220KV SIDE. |
| 7 | 05-08-15 | 14:54 | WAZIRPUR 220/33kV 100MVA Tx-II | 05-08-15 | 18:13 | TX TRIPPED ON PRV. |
| 8 | 06-08-15 | 11:30 | MASJID MOTH 220/33kV 100MVA Tx-I | 06-08-15 | 12:45 | TX TRIPPED ON PRV ALARM,CB TROUBLE ALARM,86. 33KV I/C-1 TRIPPED ON 86. |
| 9 | 07-08-15 | 07:40 | LODHI RD 33/11kV, 16MVA Tx-Iv | 07-08-15 | 12:10 | TX TRIPPED ON LOW OIL ALARM,DIFFERENTIAL,86. 11KV I/C-4 TRIPPED WITHOUT INDICATION. |
| 10 | 08-08-15 | 16:00 | GAZIPUR 220/66kV 160MVA Tx-I | 08-08-15 | 16:16 | TX TRIPPED ON 87 DIFFERENTIAL AND 66KV I/C-1 TRIPPED WITHOUT INDICATION. |
| 11 | 09-08-15 | 14:28 | ROHINI 220/66kV 100MVA Tx-III | 09-08-15 | 16:05 | AT TX TRIPPED DUE TO OPERATION OF BUS BAR PROTECTION. |
| 12 | 13-08-15 | 12:40 | BAMNAULI 400/220kV 500MVA ICT-II | 13-08-15 | 14:43 | ICT TRIPPED ON BUCHHOLZ. |
| 13 | 13-08-15 | 13:49 | PEERA GARHI 220/33kV 100MVA Tx-III | 13-08-15 | 16:36 | TX TRIPPED ON 86. |
| 14 | 13-08-15 | 18:54 | OKHLA 220/33kV 100MVA Tx-IV | 13-08-15 | 19:08 | 33KV I/C OF TX TRIPPED ON E/F,86. |
| 15 | 13-08-15 | 18:54 | OKHLA 220/33kV 100MVA Tx-III | 13-08-15 | 19:08 | 33KV I/C OF TX TRIPPED ON E/F,86. |
| 16 | 13-08-15 | 20:50 | PRAGATI 220/66kV 160MVA Tx-II | 13-08-15 | 21:23 | TX TRIPPED ON O/C,R-PH,86. 66KV I/C-2 TRIPPED ON O/C, E/F. |
| 17 | 13-08-15 | 20:50 | PRAGATI 220/66kV 160MVA Tx-I | 13-08-15 | 23:13 | TX TRIPPED ON LVREF,HVREF,INTER TRIP,O/C R-PH. 66KV I/C-1 TRIPPED ON O/,E/F. |
| 18 | 13-08-15 | 20:50 | GEETA COLONY 220/33kV 100MVA Tx-II | 13-08-15 | 20:59 | 33KV I/C-2 TRIPPED ON SPS. |
| 19 | 14-08-15 | 05:42 | BAMNAULI 400/220kV 500MVA ICT-II | 14-08-15 | 14:44 | TX TRIPPED ON 30K BUCHHOLZ TRIP,95 AND 86. |
| 20 | 14-08-15 | 10:40 | NARAINA 33kV 10MVAR CAP. BANK-I | 14-08-15 | 12:29 | CAP BANK TRIPPED ON UNBALANCING. |
| 21 | 14-08-15 | 15:20 | LODHI RD 220/33kV 100MVA Tx-I | 15-08-15 | 00:10 | TX TRIPPED ON DIFFERENTIAL,86A&B. 33KV I/C-1 TRIPPED ON 86A&B. |
| 22 | 16-08-15 | 08:40 | TRAUMA CENTER 220/33kV 100MVA Tx-II | 16-08-15 | 11:35 | TX TRIPPED ON 86A & b. |
| 23 | 16-08-15 | 13:36 | NAJAFGARH 66/11kV, 20MVA Tx-II | 16-08-15 | 14:11 | TX TRIPPED ON O/C,E/F,86. |
| 24 | 17-08-15 | 03:35 | GAZIPUR 220/66kV 160MVA Tx-I | 17-08-15 | 05:30 | TX TRIPPED ON DIFFERENTIAL,86 AND 66KV I/C OF TX TRIPPED ON MASTER RELAY. |
| 25 | 17-08-15 | 07:10 | OKHLA 220/33kV 100MVA Tx-V | 17-08-15 | 16:12 | TX TRIPPED ON R-PH,DIFFERENTIAL,86 AND 66KV I/C OF TX TRIPPED ON 86. |

| SL NO | OCCURRENCE OF BREAK-DOWN | | DETAILS OF THE BREAKDOWN | TIME OF RESTORATION | | REMARKS |
|-------|--------------------------|-------|---|---------------------|---------|---|
| | DATE | TIME | | DATE | TIME | |
| 26 | 18-08-15 | 13:45 | INDRAPRASTHA POWER 220/33kV 100MVA Tx-II | 18-08-15 | 13:55 | 33KV I/C-2 TRIPPED ON E/F. |
| 27 | 19-08-15 | 09:42 | PEERA GARHI 220/33kV 100MVA Tx-III | 19-08-15 | 09:58 | 33KV I/C-3 TRIPPED ON 86. |
| 28 | 20-08-15 | 05:15 | GOPALPUR 220/33kV 100MVA Tx-II | 20-08-15 | 05:42 | 33KV I/C-2 TRIPPED ON 86. SPARKING OCCURRED ON 86 RELAY. |
| 29 | 20-08-15 | 19:16 | PEERA GARHI 220/33kV 100MVA Tx-II | 20-08-15 | 19:23 | 33KV I/C-2 OF TX TRIPPED ON 86. |
| 30 | 20-08-15 | 21:55 | INDRAPRASTHA POWER 220/33kV 100MVA Tx-II | 20-08-15 | 22:35 | TX TRIPPED ON SPR,86 AND 33KV I/C-2 TRIPPED ON INTER TRIPPING. |
| 31 | 21-08-15 | 00:00 | INDRAPRASTHA POWER 220/33kV 100MVA Tx-II | 21-08-15 | 13:00 | TX TRIPPED ON SPR,86. 33KV I/C-2 TRIPPED ON INTER TRIPPING. |
| 32 | 21-08-15 | 02:27 | PEERA GARHI 220/33kV 100MVA Tx-II | 21-08-15 | 02:30 | 33KV I/C-2 TRIPPED ON 86. |
| 33 | 21-08-15 | 05:02 | WAZIRPUR 220/33kV 100MVA Tx-I | 21-08-15 | 05:29 | TX TRIPPED ON 86. |
| 34 | 24-08-15 | 07:35 | INDRAPRASTHA POWER 220/33kV 100MVA Tx-II | 24-08-15 | 08:05 | TX TRIPPED WITHOUT INDICATION. MONKEY ELECTROCUTED IN YARD AND ALL PHASE LA DAMAGED. |
| 35 | 24-08-15 | 08:35 | PAPPANKALAN-I 66/11kV, 20MVA Tx-II | 24-08-15 | 12:08 | TX TRIPPED ON DIFFERENTIAL ,E/F. |
| 36 | 29-08-15 | 08:52 | BAMNAULI 400/220kV 500MVA ICT-II | 29-08-15 | 14:29 | ICT TRIPPED ON 30B, 186 A&B |
| 37 | 29-08-15 | 12:02 | PEERA GARHI 220/33kV 100MVA Tx-III | 29-08-15 | 12:15 | 33KV I/C-III TRIPPED ON 86A 86B |
| 38 | 17-09-14 | 15:33 | 220kV GAZIPUR - BTPS CKT | 01-08-15 | 11:12 | AT BTPS CKT TRIPPED ON D/P,Z-1,Y-PH, DIST-10.2KMS.AT GAZIPUR CKT TRIPPED ON D/P,Z-1,Y-PH, DIST-9.69KMS. CABLE FAULTY BEING REPLACED BY TRANSMISSION COMPANY OF UP . |
| 39 | 16-03-15 | 15:25 | 400kV Bamnauli-Jhatikara Ckt-I | Contd. | Contd . | S/D WAS AVAILED ON CKT FOR REPLACING RELAY AT 400KV BAMNAULI. AFTER CLEARANCE CKT WAS CHARGED AT 19:43 HRS BUT CKT TRIPPED ON D/P,Z-1, A-PH,DIST-335 METER. CKT STRAIGHT THROUGH JOINT BURNT AND CABLE DAMAGED. |
| 40 | 17-04-15 | 18:42 | 220kV Maharani Bagh- Electric Lane Ckt-II | Contd. | Contd . | AT MAHARANI BAGH CKT TRIPPED ON FAULT LOOP B TO E. AT ELECTRIC LANE CKT TRIPPED ON D/P,Z-1,C-PH,186,LBB, BUS BAR PROTECTION. CABLE DAMAGED DURING EXCAVATION BY MTNL. |
| 41 | 22-06-15 | 16:33 | 220kV MAHARANI BAGH - LODHI ROAD CKT-II | 30.08.15 | 12:08 | HEAVY OIL LEAKAGE FROM B PHASE BUSHING CABLE END. |
| 42 | 01-08-15 | 13:11 | 220kV OKHLA - BTPS CKT. - II | 01-08-15 | 13:20 | AT BTPS CKT TRIPPED ON D/P,Z-1,B-PH,DIST-2.3KM AND E/F. CKT DID NOT TRIP AT OKHLA. |
| 43 | 02-08-15 | 15:42 | 220kV GAZIPUR - BTPS CKT | 02-08-15 | 17:22 | AT BTPS CKT TRIPPED ON D/P,Z-1,Y-PH,DIST-14.2KM. CKT CB WAS OPEN AT GAZIPUR. |
| 44 | 02-08-15 | 19:15 | 220kV MUNDKA-KANJHAWALA CKT-I | 02-08-15 | 19:27 | AT KANJHAWALA CKT TRIPPED ON D/P,MAIN-1&2. NO TRIPPING AT MUNDKA. |

| SL NO | OCCURRENCE OF BREAK-DOWN | | DETAILS OF THE BREAKDOWN | TIME OF RESTORATION | | REMARKS |
|-------|--------------------------|-------|--------------------------------------|---------------------|-------|--|
| | DATE | TIME | | DATE | TIME | |
| 45 | 03-08-15 | 14:47 | 220kV DSIIDC BAWANA-NARELA CKT-I | 03-08-15 | 15:02 | AT NARELA CKT TRIPPED ON D/P,Z-1,R&B-PH. AT DSIDC CKT TRIPPED ON AB&C-PH,86 |
| 46 | 03-08-15 | 14:47 | 220kV DSIIDC BAWANA-NARELA CKT-II | 03-08-15 | 15:02 | AT NARELA CKT TRIPPED ON D/P,Z-1,R&B-PH. NO TRIPPING AT DSIDC BAWANA. |
| 47 | 03-08-15 | 14:50 | 220kV MEHRAULI - BTPS CKT. - II | 03-08-15 | 16:26 | AT MEHRAULI CKT TRIPPED ON D/P,Z-1,DIST-4.312KM,86,186. AT BTPS CKT TRIPPED ON D/P,Z-2,R-PH,DIST-16.3KM. |
| 48 | 04-08-15 | 11:48 | 220KV BAWANA-SHALIMARBAGH CKT-II | 04-08-15 | 11:55 | AT SMB CKT TRIPPED ON D/P,Z-3,A-PH. NO TRIPPING AT BAWANA. |
| 49 | 04-08-15 | 15:33 | 220kV DSIIDC BAWANA-NARELA CKT-I | 04-08-15 | 20:10 | AT NARELA CKT TRIPPED ON B-PH,186. NO TRIPPING AT DSIDC BAWANA. |
| 50 | 04-08-15 | 15:33 | 220kV BAWANA-DSIIDC BAWANA CKT-II | 04-08-15 | 19:44 | AT BAWANA CKT TRIPPED ON D/P,Z-1,DIST-3.24KM,A/R,86. NO TRIPPING AT DSIDC BAWANA. R-PH LOWER CLAMP OF CB DAMAGED AT BAWANA AND Y-PH COMMON JUMPER FLASHED AT BSIDC BAWANA. |
| 51 | 04-08-15 | 15:33 | 220kV BAWANA-DSIIDC BAWANA CKT-I | 04-08-15 | 15:56 | AT DSIDC BAWANA CKT TRIPPED ON D/P,Z-2,A/R. NO TRIPPING AT BAWANA. |
| 52 | 05-08-15 | 10:45 | 220kV MEHRAULI - BTPS CKT. - I | 05-08-15 | 11:00 | AT MEHRAULI CKT TRIPPED ON D/P, Z-1, DIST-12.42 KM,C-N PHASE. AT BTPS CKT TRIPPED ON D/P, Z-1, DIST-9.5 KM B-PH. |
| 53 | 05-08-15 | 16:07 | 220kV BAMNAULI-PAPPANKALAN-II CKT-II | 05-08-15 | 19:52 | AT PPK-2 CKT TRIPPED ON D/P, Z-1, DIST-3.4 KM. AT BAMNAULI CKT TRIIPED ON D/P, Z-1, DIST-7.1 KM,C-PH. |
| 54 | 07-08-15 | 10:41 | 400kV Mandola-Bawana Ckt-II | 07-08-15 | 10:49 | AT BAWANA CKT TRIPPED ON 186. NO TRIPPING AT MUNDKA. |
| 55 | 07-08-15 | 10:53 | 400kV Bawana-Mundka Ckt-II | 07-08-15 | 13:05 | AT BAWANA CKT TRIPPED ON 186. NO TRIPPING AT MUNDKA. |
| 56 | 07-08-15 | 15:38 | 220KV WAZIRABAD - MANDOLA CKT-I | 07-08-15 | 18:31 | AT WZB CKT TRIPPED ON D/P,Z-1,RY&B-PH. AT MDL CKT TRIPPED ON D/P,Z-1,186A&B,DIST-10.3KM |
| 57 | 08-08-15 | 12:50 | 220kV GEETA COLONY-PATPARGANJ CKT-I | 08-08-15 | 12:58 | AT GEETA COLONY CKT TRIPPED ON D/P,Z-1,AB&C-PH,DIST-2.399KM.O/C. AT PPG CKT TRIPPED ON 186,86. |
| 58 | 08-08-15 | 18:08 | 220kV GOPALPUR-MANDOLACKT-I | 08-08-15 | 18:32 | AT GOPALPUR CKT TRIPPED ON D/P,Z-1,AB&C-PH,DIST-10.2KM. AT MANDOLA CKT TRIPPED ON D/P,Z-1,DIST-17.27KM. |
| 59 | 09-08-15 | 14:28 | 220KVBAWANA- ROHINI CKT-II | 09-08-15 | 16:05 | AT ROHINI CKT TRIPPED DUE TO OPERATION OF BUS BAR PROTECTION. NO TRIPPING AT BAWANA. |
| 60 | 09-08-15 | 14:28 | 220kV ROHINI-SHALIMARBAGH CKT-II | 09-08-15 | 15:52 | AT ROHINI CKT TRIPPED DUE TO OPERATION OF BUS BAR PROTECTION. NO TRIPPING AT SHALIMARBAGH. |
| 61 | 10-08-15 | 12:13 | 220kV MUNDKA-KANJHAWALA CKT-I | 10-08-15 | 12:40 | AT MUNDKA CKT TRIPPED ON D/P,Z-2,DIST-15.19KM,86. |
| 62 | 12-08-15 | 15:17 | 220KV WAZIRABAD - MANDOLA CKT-II | 12-08-15 | 16:24 | AT WZB CKT TRIPPED ON D/P,Z-1,B-N-PH,DIST-10.3KM. AT MANDOLA CKT TRIPPED ON D/P,Z-1,B-PH,DIST-9.82KM. |
| 63 | 12-08-15 | 15:56 | 220kV MUNDKA-NAJAFGARH CKT-I | 12-08-15 | 17:08 | AT MUNDKA CKT TRIPPED ON D/P,Z-2,R-PH,86A,DIST-12.34KM. NO TRIPPING AT NAJAFGARH. |

| SL NO | OCCURRENCE OF BREAK-DOWN | | DETAILS OF THE BREAKDOWN | TIME OF RESTORATION | | REMARKS |
|-------|--------------------------|-------|--|---------------------|-------|--|
| | DATE | TIME | | DATE | TIME | |
| 64 | 12-08-15 | 16:06 | 220KV GAZIPUR - MAHARANIBAGH CKT. -I | 12-08-15 | 23:58 | AT MAHARANI BAGH CKT TRIPPED ON TC1,R-PH FAULTY,TC2 B-PH FAULTY. NO TRIPPING AT GAZIPUR. B-PH JUMPER SNAPPED AT T NO-33. |
| 65 | 14-08-15 | 12:55 | 400kV Dadri - Harsh Vihar Ckt. - II | 14-08-15 | 14:58 | AT HARSH VIHAR CKT TRIPPED ON MAIN PROTECTION TRIP, DIRECT RECEIVE CHANNEL-1. RELAY PROBLEM AT DADRI. |
| 66 | 15-08-15 | 13:16 | 220KV GEETA COLONY- PATPARGANJ CKT-I | 15-08-15 | 13:22 | AT GEETA COLONY CKT TRIPPED ON D/P,Z-1,86. AT PPG CKT TRIPPED ON D/P,Z-1,86. BURNT KITE THREAD FOUND AT PPG YARD. |
| 67 | 16-08-15 | 11:16 | 220kV GAZIPUR - BTPS CKT | 16-08-15 | 16:33 | AT GZP CKT TRIPPED ON D/P,DIST-18.6KM. |
| 68 | 18-08-15 | 12:55 | 220kV SARITA VIHAR - BTPS CKT.-II | 18-08-15 | 20:20 | AT SARITA VIHAR CKT TRIPPED ON D/P,Z-2,A&B-PH,186A&B, DIST-3.521KM. R&Y-PH LINE ISOLATOR TOP CLAMP CONDUCTOR DAMAGED. AT BTPS CKT TRIPPED ON D/P,Z-1,DIST-0.5KM. |
| 69 | 19-08-15 | 11:50 | 220KVBAWANA- ROHINI CKT-II | 19-08-15 | 17:21 | AT BAWANA CKT TRIPPED ON D/P, A-PH, 86. AT ROHINI CKT TRIPPED ON D/P, A-PH, 186. |
| 70 | 19-08-15 | 15:07 | 220KV MEHRAULI - VASANT KUNJ CKT.- II | 19-08-15 | 15:13 | AT MEHRAULI CKT TRIPPED ON AUTO RE-CLOSE. NO TRIPPING AT VASANT KUNJ. |
| 71 | 19-08-15 | 15:07 | 220KV MEHRAULI - VASANT KUNJ CKT.-I | 19-08-15 | 15:13 | AT MEHRAULI CKT TRIPPED ON AUTO RE-CLOSE. NO TRIPPING AT VASANT KUNJ. |
| 72 | 20-08-15 | 04:55 | 220KV GOPALPUR-SUBZI MANDI CKT-I | 20-08-15 | 09:42 | AT GOPALPUR CKT TRIPPED ON E/F. NO TRIPPING AT SUBZIMANDI. |
| 73 | 20-08-15 | 09:49 | 220KV BAWANA - KANJHAWALA CKT-2 | 20-08-15 | 09:50 | AT KANJHAWALA CKT TRIPPED ON M2 RYB RELAY. NO TRIPPING AT BAWANA. |
| 74 | 20-08-15 | 09:49 | 220KV BAWANA - KANJHAWALA CKT | 20-08-15 | 10:19 | AT BAWANA CKT TRIPPED ON D/P,Z-1,DIST-1.35KM,O/C,A/R. AT KANJHAWALA CKT TRIPPED D/P,C-PH,DIST-8.8KM,86. |
| 75 | 20-08-15 | 17:17 | 220KV GOPALPUR-SUBZI MANDI CKT-II | 20-08-15 | 17:50 | AT GOPALPUR CKT TRIPPED ON D/P,Z-1,DIST-4.3KM. NO TRIPPING AT SUBZIMANDI. |
| 76 | 23-08-15 | 14:38 | 220KV WAZIRABAD - MANDOLA CKT-III | 23-08-15 | 15:04 | AT MANDOLA CKT TRIPPED ON D/P,Z-2,DIST-17.84KM, B&Y-PH, O/C. CKT DID NOT TRIP AT WZB. |
| 77 | 23-08-15 | 14:38 | 220KV WAZIRABAD - MANDOLA CKT-IV | 23-08-15 | 15:41 | AT MANDOLA CKT TRIPPED ON D/P,Z-2,DIST-12.58KM,O/C. AT WZB CKT TRIPPED ON B-PH,O/C. |
| 78 | 23-08-15 | 14:42 | 220kV MEHRAULI - VASANT KUNJ CKT.- II | 23-08-15 | 15:54 | AT MEHRAULI CKT TRIPPED ON 67CX,186A&B,A/R. CKT DID NOT TRIP AT VASANT KUNJ. |
| 79 | 24-08-15 | 19:53 | 220KV GAZIPUR - MAHARANIBAGH CKT. -II | 24-08-15 | 20:40 | AT M BAGH CKT TRIPPED ON D/P,Z-2&3,PT FUSE FAILED. AT GAZIPUR CKT TRIPPED ON D/P,B-PH,DIST-6.14KM,E/F. |
| 80 | 25-08-15 | 10:55 | 220KV MAHARANIBAGH-TRAUMA CENTER CKT-I | 25-08-15 | 11:37 | CKT TRIPPED DUE TO OPERATION OF BUS BAR PROTECTION AT MAHARANI BAGH. |
| 81 | 25-08-15 | 10:55 | 220KV GAZIPUR - MAHARANIBAGH CKT. -II | 25-08-15 | 11:25 | CKT TRIPPED DUE TO OPERATION OF BUS BAR PROTECTION AT MAHARANI BAGH. |
| 82 | 25-08-15 | 10:55 | 220KV MAHARANIBAGH-MASJID MOTH CKT-I | 25-08-15 | 11:15 | CKT TRIPPED DUE TO OPERATION OF BUS BAR PROTECTION AT MAHARANI BAGH. |

| SL NO | OCCURRENCE OF BREAK-DOWN | | DETAILS OF THE BREAKDOWN | TIME OF RESTORATION | | REMARKS |
|-------|--------------------------|-------|-------------------------------------|---------------------|-------|--|
| | DATE | TIME | | DATE | TIME | |
| 83 | 26-08-15 | 12:15 | 220kV MEHRAULI - VASANT KUNJ CKT.-I | 26-08-15 | 12:24 | AT MEHRAULI CKT TRIPPED ON D/P,Z-1,DIST-4.946KM. NO TRIPPING AT VASANT KUNJ. |
| 84 | 26-08-15 | 13:05 | 220kV DSIIDC BAWANA-NARELA CKT-I | 26-08-15 | 13:52 | AT DSIDC BAWANA CKT TRIPPED ON D/P,Z-2,AB&C-PH,DIST-11.32KM. CKT DID NOT TRIP AT NARELA. |
| 85 | 26-08-15 | 13:05 | 220kV DSIIDC BAWANA-NARELA CKT-II | 26-08-15 | 13:52 | AT DSIDC BAWANA CKT TRIPPED ON D/P,Z-2,AB&C-PH,DIST-11.32KM. CKT DID NOT TRIP AT NARELA. |
| 86 | 26-08-15 | 14:51 | 220kV OKHLA - BTPS CKT. - II | 26-08-15 | 16:32 | AT BTPS CKT TRIPPED ON D/P,Z-1,B-PH,DIST-2.8KM,E/F. CKT DID NOT TRIP AT OKHLA. |
| 87 | 27-08-15 | 11:31 | 220kV NARELA - MANDOLA CKT-I | 27-08-15 | 12:20 | AT MANDOLA CKT. TRIPPED ON ZONE-II & III, DISTANCE 15.38KMS. AT NARELA NO TRIPPING |
| 88 | 27-08-15 | 12:18 | 220kV DSIIDC BAWANA-NARELA CKT-II | 27-08-15 | 20:11 | AT DSIDC BAWANA CK.T RIPPED ON DIST. PROT, ZONE-I, DIST 2.6KMS. AT NARELA CVT AVAILABLE |
| 89 | 27-08-15 | 12:18 | 220kV DSIIDC BAWANA-NARELA CKT-I | 27-08-15 | 20:11 | AT DSIDC BAWANA CKT. TRIPPED ON MAIN I & II, AUTO RECLOSE, TRIP A&B, ZONE-II AT NARELA SUPPLY FAIL |
| 90 | 28-08-15 | 10:38 | 220kV BAWANA-SHALIMARBAGH CKT-II | 28-08-15 | 18:46 | AT BAWANA CKT. TRIPPED ON DIST PROT, AT SHALIMARBAGH NO TRIPPING |
| 91 | 28-08-15 | 12:25 | 220kV BAMNAULI - DIAL CKT-II | 28-08-15 | 13:29 | AT BAMNAULI CKT. TRIPPED ON DIST PROT, 86AB, B PHASAE 30C AT DIAL CKT. TRIPPED ON MAIN -I, B PHASE, MAIN -II B PHASEA, DIFFERENTIAL TRIP |
| 92 | 28-08-15 | 12:29 | 400kV Bawana-Mundka Ckt-I | 28-08-15 | 18:15 | AT MUNDKA CKT. TRIPPED ON ZONE-III, RYB PHASE, AT BAWANA NO TRIPPING |
| 93 | 29-08-15 | 11:57 | 220kV BAWANA - KANJHAWALA CKT | 29-08-15 | 13:24 | AT BAWANA CKT. TRIPPED ON ZONE-I, E/F, DIST 3.11KM AT KHANJAWALA NO TRIPPING |
| 94 | 29-08-15 | 11:57 | 220kV BAWANA - KANJHAWALA CKT-2 | 29-08-15 | 12:05 | AT BAWANA CKT. TRIPPED ON M-2, 86 AT KHANJAWALA CVT FAILED |
| 95 | 29-08-15 | 12:25 | 220kV PRAGATI - SARITA VIHAR CKT-II | 29-08-15 | 12:43 | AT SARITA VIHAR CKT .TRIPPED ON 186A, 186B AT PRAGATIR CKT. TRIPPED ON ZONE-I |
| 96 | 31-08-15 | 08:17 | 220KVBAWANA- ROHINI CKT-II | 31-08-15 | 16:46 | AT BAWANA CKT. TRIPPED ON DIST PROT. ZONE-II, 86 AT ROHINI CKT. TRIPPED ON DIST PROT, A PHAS, 186A |

20 DETAILS OF UNDER FREQUENCY RELAY OPERATIONS IN DELHI POWER SYSTEM DURING THE MONTH OF AUGUST 2015

| DATE | S. N. | TIME | | Name of Grid | NAME OF AFFECTED FEEDERS | MODE | LOAD RELIEF IN MW |
|------|-------|------|----|--------------|--------------------------|------|-------------------|
| | | OUT | IN | | | | |
| | | | | | | | |
| | | | | NIL | | | |
| | | | | | | | |